

The DBI 2MP Clinical LCD

**DOUBLE
BLACK
IMAGING**

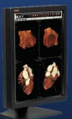
DBICL20

With a slim and sleek designs, the DBICL20 is ideally designed for PACS review, Modality Image Viewing or as a PACS Work list Display with DICOM 3.14 compliance.

The DBICL20 provides multiple diagnostic modes allowing versatility throughout the hospital enterprise and are backed by DBI's industry leading warranty and service program.



- ◆ 20.1" 2MP Color TFT LCD
- ◆ Ultra High Brightness
- ◆ Contrast Ratios - 1000:1
- ◆ Wide Viewing Angle - 178° Horizontal & Vertical
- ◆ DICOM Compliant out of the box
- ◆ Built in Backlight Stability Control
- ◆ Perfect for Clinical and Modality Imaging Applications
- ◆ Digital and Analog Inputs for a variety of uses
- ◆ Full 3 Year Warranty



PACS Displays



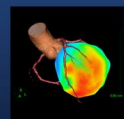
Clinical Displays



Surgical Displays



DICOMatrix



3D Imaging

DBICL20

Description	20.1ö Clinical TFT LCD
Recommended Modalities	Clinical, PACS Review, Modality Imaging, CT, MR, NM, Ultrasound
Diagonal Screen Size	20.1ö
# of Pixels	2 Mega-Pixel
Resolution	1200 x 1600 Portrait; 1600 x 1200 Landscape
Brightness	300 cd/m ² ; 225 cd/m ² Calibrated Brightness
Contrast Ratio	800:1
Viewing Angle	178° Horizontal & Vertical
Video Input	DVI-D, Display Port, Composite, HDMI, Component
Diagnostic Viewing Modes	Clearbase, Bluebase, Text View, sRGB and User
Dimensions HxWxD (Inches)	17.7 x 17.7 x 8.9ö
Weight with Stand/Base (lbs)	22 lbs
Power Supply	Internal
Power Consumption	65W/ Less than 2W during Power save
Compliance/Safety Standards	UL60601-1, CE, CSA Std C22.2 No. 601.1, IEC/EN60601-1, FCC Class B, VCC1 Class B, MIC, CCC, KCC, CB
Service & Support	24/7
Warranty	3 years on the LCD
Other Options	Calibration conformance, tracking and reporting optional with X-CAL Web, Rear Sensor for Back light brightness control, Extended Warranty optional, VESA Standard Mounting configuration, Other Mounting options available



DOUBLE
BLACK
IMAGING

Double Black Imaging

11005 Dover St, Suite 500
Westminster, CO 80021
Tel. 877-852-2870, 303-404-2222
Fax 303-460-0276
sales@doubleblackimaging.com
www.doubleblackimaging.com



DOUBLE
BLACK
IMAGING