

NDT DBI 3MP Mono LED

DOUBLE
BLACK
IMAGING

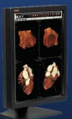


DBIMX30-LED-NDT

The DBIMX30-LED-NDT is a 3 mega-pixel monochrome LED backlit display offering retractable front sensors for True DICOM gray level and luminance auto-calibration. The unobtrusive sensor emerges from the bezel to calibrate and retracts when calibration is complete.

X-CAL® Client and Remote Administration DICOM Auto-Calibration Software are included with each system at no charge. X-CAL® Client, the local workstation software will allow even individual workstations to be configured for auto-calibration without a network software piece. X-CAL® Remote Administration Server Software and the X-Series will allow an administrator to monitor all the displays within the enterprise, launch calibration and receive alerts if displays fall out of calibration or if calibration was unable to be completed.

- ◆ 20.8" 3MP (1536 x 2048, 2048 x 1536) Mono TFT LED
- ◆ Brightness - 1000 cd/m²; Contrast Ratio - 1200:1
- ◆ Display Port Compatibility as well as DVI-D Input
- ◆ Complete Screen Luminance Uniformity Control
- ◆ Built in Retractable Front Sensors with Backlight Sensor
- ◆ 14 Bit Processing for Precise Image Rendering
- ◆ Digital Ambient Light Compensation
- ◆ Private Light for Illumination in the Reading Room
- ◆ Full 3 Year Warranty



PACS Displays



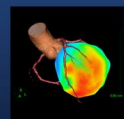
Clinical Displays



Surgical Displays



DICOMetrix



3D Imaging

DBIMX30-LED-NDT

Description	3 Mega-Pixel Monochrome LED backlit display with retractable front sensors and backlight sensor for Automatic DICOM 3.14 Calibration
Recommended Modalities	NDT and Industrial Applications
Diagonal Screen Size	20.8ö
# of Pixels	3.1 Mega-Pixel
Resolution	1536 x 2048 Portrait; 2048 x 1536 Landscape
Brightness	1000 cd/m ² ; 500 cd/m ² Calibrated Brightness
Contrast Ratio	1200:1
Viewing Angle	170° Horizontal & Vertical
Palette	14 bit
Video Inputs	DVI-D, DisplayPort
Dimensions HxWxD (Inches)	21.5 x 14.8 x 7.8ö
Weight with Stand/Base (lbs)	25.5 lbs
Power Supply	Internal
Power Consumption	105W/Less than 1W During power save
Compliance/Safety Standards	UL60601-1, cUL2601-1, CE, IEC/EN60601-1, FCC Class B, VCCI Class B, KCC, ICES-003-B, C-Tick, CSA std, C22.2 No.601.1, CCC, FDA 510(k)
Service & Support	24/7
Warranty	3 Years
Other Features	Retractable Front Sensor for True Auto-Calibration, Client/Remote Administration Calibration Software included, Rear Sensor for Back light brightness control, Digital Ambient Light Compensation, Complete Screen Luminance Uniformity Control, Built in LED PrivateLite, 14 Bit Processing for Precise Image Rendering, VESA Standard Mounting configuration, Other Mounting options available



DOUBLE
BLACK
IMAGING

Double Black Imaging

11005 Dover St, Suite 500
Westminster, CO 80021
Tel. 877-852-2870, 303-404-2222
Fax 303-460-0276
sales@doubleblackimaging.com
www.doubleblackimaging.com



DOUBLE
BLACK
IMAGING