

The DBI 19" Surgical LCD

DOUBLE
BLACK
IMAGING

DBI 19S



The DBI19S Surgical LCD provides a superior solution that meets all stringent surgical requirements. With ultra high brightness and contrast, it is the monitor of choice for the OR environment. The DBI19S supports a variety of video inputs for existing and new camera technologies, eliminates costly signal conversion, image degradation and image lag. This surgical displays features exceptionally fast response time necessary when viewing live video or motion.

This unit is compatible with standard boom, wall, or cart mounts and has the ability to be sanitized within the OR environment.

- 19" 1.3MP (1280 x 1024) Color TFT LCD
- Brightness - 300 cd/m²
- Contrast Ratio - 1000:1
- Wide Viewing Angle - 178° Horizontal & Vertical
- DICOM Compliant out of the box
- Built in Backlight Stability Control
- IPX 1 Rated for the Surgical Suite
- Digital and Analog Inputs for a variety of uses
- Full 3 Year Warranty



PACS Displays



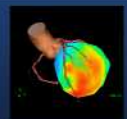
Clinical Displays



Surgical Displays



DICOMetrix



3D Imaging

DBI 19S

Description	1.3 Mega-Pixel Color LCD with backlight stability brightness control
Recommended Modalities	Surgical, Enclosure is IPX1 Rated
Diagonal Screen Size	19", 4:3 Aspect Ratio
# of Pixels	1.3 Mega-Pixel
Resolution	1280 x 1024 Landscape
Brightness	300 cd/m ²
Contrast Ratio	1000:1
Viewing Angle	178° Horizontal & Vertical
Video Inputs	Composite - RCA (x1), NTSC, PAL, DVI:DVI-D (x1), PC RGB: 15 Pin D Sub (x1) S-Video - 4pin DIN(x1), NTSC, PAL, Sync on Green: BNC (x1)
Scanning Frequency	Horizontal Scan - 30-90KHz (15.75KHz for CVBS), Vertical Scan - 50-85Hz (WUXGA, UXAG @ 60Hz), Maximum Bandwidth - 148MHz
Diagnostic Viewing Modes	Bluebase, Clearbase, sRGB, Text, Grayscale, User
Dimensions HxWxD (Inches)	14.2 x 19.4 x 7.9"
Weight with Stand/Base (lbs)	18.9 lbs
Power Supply	Internal
Power Consumption	45W
Compliance/Safety Standards	UL60601-1, IE60601-1, CE, CCC, FCC Class B, EN60601-1-2, CE, EN 55022 Class B, EN6100-3-2, MIC, VCCI
Service & Support	24/7
Warranty	3 years on the LCD, Electronics and Backlight; 3 years on the graphic controller
Other Options	Extended warranty options available, Mounting, Cart and other OR accessories available.

Double Black Imaging

11005 Dover St, Suite 500
Westminster, CO 80021
Tel. 877-852-2870, 303-404-2222
Fax 303-460-0276
sales@doubleblackimaging.com
www.doubleblackimaging.com

DOUBLE
BLACK
IMAGING

DOUBLE
BLACK
IMAGING