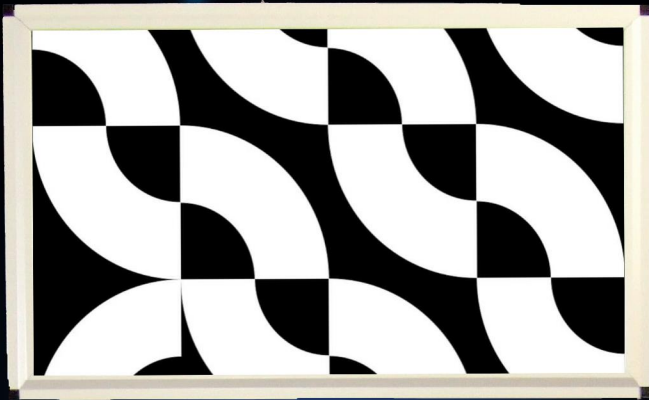


**DOUBLE  
BLACK  
IMAGING**

# The DBI 32" MRI Safe LCD



The DBI32-MR Safe is a 2 mega-pixel color LED backlit display designed for use in the MRI Suite. This is the only MRI Compatible, MR Safe display with lag free output and no interference with the scanner even when positioned at the exit of the bore.

- ◆ 2MP HD Resolution (1920 x 1080)
- ◆ 32" Color LED Backlit Display
- ◆ MR Safe in Accordance with ASTM F2503-08
- ◆ Brightness - 350 cd/m<sup>2</sup>
- ◆ Contrast Ratio - 1400:1
- ◆ Light output is synchronous to the input video signal
- ◆ Dual Link DVI Input
- ◆ Automatic Backlight Compensation
- ◆ Full 1 Year Warranty



PACS Displays



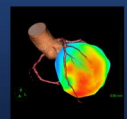
Clinical Displays



Surgical Displays



DICOMetrix



3D Imaging

# DBI32- MRSafe

<b>Description</b>	2 Mega-Pixel Color LED H-IPS LCD with 120Hz panel drive
<b>Recommended Use</b>	For MR Compatible, MR Safe Viewing in the MR Suite
<b>Diagonal Screen Size</b>	32ö
<b># of Pixels</b>	2 Mega-Pixel
<b>Resolution</b>	1920 x 1080
<b>Brightness</b>	350 cd/m <sup>2</sup>
<b>Contrast Ratio</b>	1400:1
<b>Viewing Angle</b>	170° Horizontal & Vertical
<b>Palette</b>	16.7 Million Colors
<b>Video Inputs</b>	Dual Link DVI
<b>Dimensions (Inches)</b>	31.3 x 19.3 x 3.07ö
<b>Weight</b>	Approx 42 lbs
<b>Power Supply</b>	External
<b>Power Consumption</b>	100 to 240 Vac nominal, 50 or 60Hz, 180W. Output: 15 Vdc.
<b>MR Safety</b>	The DBI24-MRSafe is categorised as MR safe in accordance with the labeling requirements of ASTM F2503-08 (öan item that poses no known hazards in all MR environmentsö). The power supply and cables are MR conditional (öan item that has been demonstrated to pose no known hazards in a specified MR environment with specified conditions of useö).
<b>EMC</b>	DBI24-MRSafe has no observed effect on functional and structural MRI scans at 3T, even with screen located at exit of scanner bore, and no effect on displayed image whilst scanning. Emissions: EN55011 class B conducted & radiated, Harmonic Currents: EN61000-3-2 class A Voltage Flicker: EN61000-3-3, ESD Immunity: EN61000-4-2, level 3 contact, Perf Criteria A Radiated Immunity: EN61000-4-3, level 3, Perf Criteria A, EFT/Burst: EN61000-4-4, level 2, Perf Criteria A, Surge: EN61000-4-5, installation class 3, Perf Criteria A , Conducted immunity:EN61000-4-6, level 3, Perf Criteria A, Magnetic Field (limit applies to PSU only): EN61000-4-8, 3 A/m, Perf Criteria A, Dips & Interruptions : EN61000-4-11, 30% 10 ms, 60% 100 ms, >95% 5000 ms, Perf Criteria A, B, B, EN60601-1, Type B Equipment, Class 1
<b>Warranty</b>	1 year



DOUBLE  
BLACK  
IMAGING

## Double Black Imaging

11005 Dover St, Suite 500  
Westminster, CO 80021  
Tel. 877-852-2870, 303-404-2222  
Fax 303-460-0276  
sales@doubleblackimaging.com  
www.doubleblackimaging.com



DOUBLE  
BLACK  
IMAGING