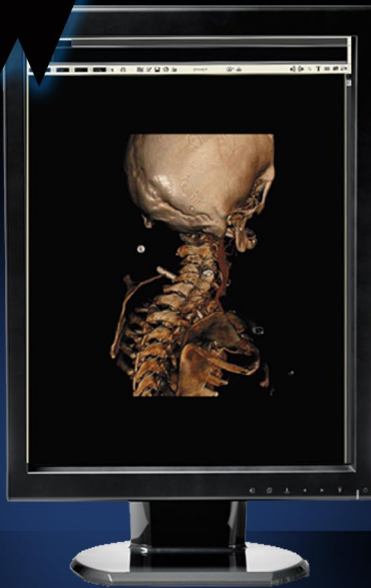


**DOUBLE  
BLACK  
IMAGING**

# 3MP Color Self-Calibrating LED

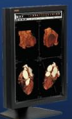
## DBICX30-LED



The DBICX30-LED is a 3 mega-pixel high bright color LED backlit display offering retractable front sensors for True DICOM gray level and luminance auto-calibration. The unobtrusive sensor emerges from the bezel to calibrate and retracts when calibration is complete.

X-CAL® Client and Remote Administration DICOM Auto-Calibration Software are included with each system at no charge. X-CAL® Client, the local workstation software will allow even individual workstations to be configured for auto-calibration without a network software piece. X-CAL® Remote Administration Server Software and the X-Series will allow an administrator to monitor all the displays within the enterprise, launch calibration and receive alerts if displays fall out of calibration or if calibration was unable to be completed.

- ◆ 21.2" 3MP (1536 x 2048, 2048 x 1536) Color TFT LED
- ◆ Brightness - 1000 cd/m<sup>2</sup>; Contrast Ratio - 1400:1
- ◆ Display Port Compatibility as well as DVI-D Input
- ◆ Complete Screen Luminance Uniformity Control
- ◆ Built in Retractable Front Sensors with Backlight Sensor
- ◆ 14 Bit Processing for Precise Image Rendering
- ◆ Digital Ambient Light Compensation
- ◆ Private Light for Illumination in the Reading Room
- ◆ Full 5 Year Warranty



PACS Displays



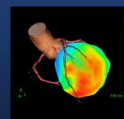
Clinical Displays



Surgical Displays



DICOMetrix



3D Imaging

# DBICX30-LED

<b>Description</b>	3 Mega-Pixel Color LED backlit display with retractable front sensors and backlight sensor for Automatic DICOM 3.14 Calibration
<b>Recommended Modalities</b>	CR, CT, DR, MR, Ultrasound, NucMed, PET, 3D, PACS
<b>Diagonal Screen Size</b>	21.2ö
<b># of Pixels</b>	3.1 Mega-Pixel
<b>Resolution</b>	1536 x 2048 Portrait; 2048 x 1536 Landscape
<b>Brightness</b>	1000 cd/m <sup>2</sup> ; 450 cd/m <sup>2</sup> Calibrated Brightness
<b>Contrast Ratio</b>	1400:1
<b>Viewing Angle</b>	170° Horizontal & Vertical
<b>Palette</b>	16.7 Million Colors
<b>Video Inputs</b>	DVI-D, DisplayPort
<b>Dimensions HxWxD (Inches)</b>	21.1 x 14.9 x 9.8ö
<b>Weight with Stand/Base (lbs)</b>	25.5 lbs
<b>Power Supply</b>	Internal
<b>Power Consumption</b>	105W/Less than 1W During power save
<b>Compliance/Safety Standards</b>	UL60601-1, cUL2601-1, CE, IEC/EN60601-1, FCC Class B, VCCI Class B, KCC, ICES-003-B, C-Tick, CSA std, C22.2 No.601.1, CCC, FDA 510(k)
<b>Service &amp; Support</b>	24/7
<b>Warranty</b>	5 years on the LCD, Electronics, Backlight and X-CAL; 3 years on the graphic controller
<b>Other Features</b>	Retractable Front Sensor for True Auto-Calibration, Client/Remote Administration Calibration Software included, Rear Sensor for Back light brightness control, Digital Ambient Light Compensation, Complete Screen Luminance Uniformity Control, Built in LED PrivateLite, 14 Bit Processing for Precise Image Rendering, VESA Standard Mounting configuration, Other Mounting options available



DOUBLE  
BLACK  
IMAGING

## Double Black Imaging

11005 Dover St, Suite 500  
Westminster, CO 80021  
Tel. 877-852-2870, 303-404-2222  
Fax 303-460-0276  
sales@doubleblackimaging.com  
www.doubleblackimaging.com



DOUBLE  
BLACK  
IMAGING