

**DOUBLE
BLACK
IMAGING**

2MP Monochrome Auto-Calibrating LED

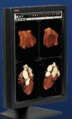
DBIMX20-LED



The DBIMX20-LED is a 2 mega-pixel Monochrome LED backlit LCD offering retractable front sensors for True DICOM gray level and luminance auto-calibration. The unobtrusive sensor emerges from the bezel to calibrate and retracts when calibration is complete. The local workstation software will allow individual workstations to be configured for auto-calibration.

The local and remote network options with the X series allow an administrator to monitor all the displays within the enterprise, launch calibration and receive alerts if LCD's fall out of calibration or if calibration was unable to be completed

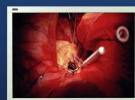
- ◆ 21.3" 2MP (1200 x 1600, 1600 x 1200) Mono TFT LCD
- ◆ Brightness - 1650 cd/m²
- ◆ Contrast Ratio - 850:1
- ◆ Complete Screen Luminance Uniformity Control
- ◆ Built in Retractable Front Sensors with Backlight Sensor
- ◆ 14 Bit Processing for Precise Image Rendering
- ◆ Digital Ambient Light Compensation
- ◆ Display Port Connectivity
- ◆ Full 5 Year Warranty



PACS Displays



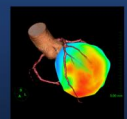
Clinical Displays



Surgical Displays



DICOMetrix



3D Imaging

DBIMX20-LED

Description	2 Mega-Pixel Monochrome LED backlit LCD with retractable front sensors and backlight sensor
Recommended Modalities	CT, MR, US, NucMed, PET & PACS Review
Diagonal Screen Size	21.3ö
# of Pixels	1.9 Mega-Pixel
Resolution	1200 x 1600 Portrait; 1600 x 1200 Landscape
Brightness	1650 cd/m ² ; 500 cd/m ² Calibrated Brightness
Contrast Ratio	850:1
Viewing Angle	176 ^o Horizontal & Vertical
Palette	14 Bit
Video Inputs	DVI, Display Port
Dimensions HxWxD (Inches)	21.1 x 14.8 x 9.8ö
Weight with Stand/Base (lbs)	24.2 lbs
Power Supply	Built in
Power Consumption	100W Max/Less than 1W During power save
Compliance/Safety Standards	FCC Class B, CE, VCCI Class B, KCC, ICES-003-B, C-Tick, UL60601-1,CE,CSA Std., C22.2 No.601.1, IEC/EN60601-1, CCC, FDA 510(k)
Service & Support	24/7
Warranty	5 years on the LCD, Electronics and Backlight; 3 years on the graphic controller
Other Features	Retractable Front Sensor for True Auto-Calibration, Client/Remote Administration Calibration Software included, Rear Sensor for Backlight brightness control, Digital Ambient Light Compensation, Complete Screen Luminance Uniformity Control, 14 Bit Processing for Precise Image Rendering, VESA Standard Mounting configuration, Other Mounting options available.



DOUBLE
BLACK
IMAGING

Double Black Imaging

11005 Dover St, Suite 500
Westminster, CO 80021
Tel. 877-852-2870, 303-404-2222
Fax 303-460-0276
sales@doubleblackimaging.com
www.doubleblackimaging.com



DOUBLE
BLACK
IMAGING