

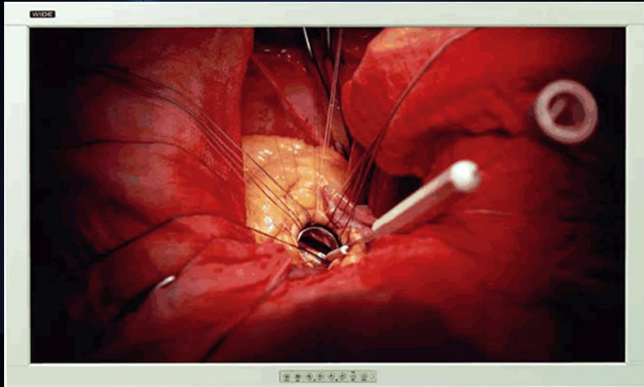
**DOUBLE
BLACK
IMAGING**

The DBI 42" Surgical LCD

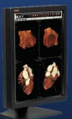
DBI42S

The 42" DBI42S surgical LCD provides a superior solution to fit all stringent surgical imaging requirements. With full HD resolution, ultra high brightness and contrast, it is the monitor of choice for the OR and ER. The DBI42S delivers bold, vibrant, images even when viewed from a distance. It supports a variety of video inputs for existing and new camera technologies, eliminates costly signal conversion, image degradation and image lag. This surgical display features exceptionally fast response time necessary when viewing live video or motion.

The DBI42S is compatible with standard booms, wall, or cart mounts and have the ability to be sanitized within the OR environment.



- ◆ IPX1 Rated - Splash resistant
- ◆ Variety of Inputs - Compatible with 3G-SDI & Legacy Systems
- ◆ Bonded Protective Panels with Sealed controls
- ◆ Can be sanitized within the OR Environment
- ◆ Picture in Picture and Picture by Picture Compatible
- ◆ Full HD Resolution
- ◆ Ultra High Brightness and Contrast
- ◆ Standard Wall, Boom and Cart mounting options available
- ◆ Full 3 Year Warranty



PACS Displays



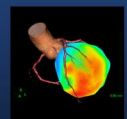
Clinical Displays



Surgical Displays



DICOMetrix



3D Imaging

DBI42S

Description	42" Surgical LCD
Recommended Modalities	Surgical, IPX1 Rated
Diagonal Screen Size	42", 16:9 Aspect Ratio
# of Pixels	2 Mega-Pixel
Resolution	1920 x 1080 Landscape
Brightness	500 cd/m ²
Contrast Ratio	1300:1
Viewing Angle	178° Horizontal & Vertical
Input Connectivity	1 x DVI-D 1, 1 x DVI-D 2 (Optional, Fiber DVI receiver DDL-Rx, DSP-Rx, DSL-Rx detachable) 1 x D-SUB, 1 x BNC (3G-SDI), 1 x BNC (CVBS), 2 x BNC (SVHS Y/C), 5 x BNC (5 x BNC Component Y/G, Pb/B, Pr/R, H/CS, VS Input)
Luminance Stabilization	Embedded auto luminance stabilizer (ALS)
GPIO Port	SWAP, PIP / PBP1 / PBP2 Select, Record Indicator
Dimensions HxWxD (Inches)	24.3 x 40.3 x 4.4" Without Stand
Weight without Stand/Base (lbs)	61.2 lbs
Power Supply	Internal
Power Consumption	Less than 100W
Compliance/Safety Standards	N60601-1-2 : 2001, IEC 60601-1, Rule 12, MDD 93/42/EEC, IEC 60950-1:2001, FCC Part 15 Subpart B Class B, UL 60601-1, CAN/CSA-C22.2 No.601.1-M90, CCC (FS-L1901D, FS-L2401D, FS-P2601D, FS-P2603D)
Service & Support	24/7
Warranty	2 years on the LCD
Other Options	Mounting, Cart and other OR accessories available.

Double Black Imaging

11005 Dover St, Suite 500
Westminster, CO 80021
Tel. 877-852-2870, 303-404-2222
Fax 303-460-0276
sales@doubleblackimaging.com
www.doubleblackimaging.com

DOUBLE
BLACK
IMAGING

DOUBLE
BLACK
IMAGING