

**DOUBLE
BLACK
IMAGING**

NDT DBI 2MP Mono LED

DBIMX20-LED-NDT



The DBIMX20-LED-NDT is a 2 mega-pixel Monochrome LED backlit LCD offering retractable front sensors for True DICOM gray level and luminance auto-calibration. The unobtrusive sensor emerges from the bezel to calibrate and retracts when calibration is complete. The local workstation software will allow individual workstations to be configured for auto-calibration.

The local and remote network options with the X series allow an administrator to monitor all the displays within the enterprise, launch calibration and receive alerts if LCD's fall out of calibration or if calibration was unable to be completed

- ◆ 21.3" 2MP (1200 x 1600, 1600 x 1200) Mono TFT LCD
- ◆ Brightness - 1650 cd/m²
- ◆ Contrast Ratio - 850:1
- ◆ Complete Screen Luminance Uniformity Control
- ◆ Built in Retractable Front Sensors with Backlight Sensor
- ◆ 14 Bit Processing for Precise Image Rendering
- ◆ Digital Ambient Light Compensation
- ◆ Display Port Connectivity
- ◆ Full 3 Year Warranty



PACS Displays



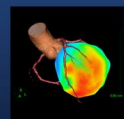
Clinical Displays



Surgical Displays



DICOMetrix



3D Imaging

DBIMX20-LED-NDT

| | |
|-------------------------------------|--|
| Description | 2 Mega-Pixel Monochrome LED backlit LCD with retractable front sensors and backlight sensor |
| Recommended Modalities | NDT and Industrial Applications |
| Diagonal Screen Size | 21.3ö |
| # of Pixels | 1.9 Mega-Pixel |
| Resolution | 1200 x 1600 Portrait; 1600 x 1200 Landscape |
| Brightness | 1650 cd/m ² ; 500 cd/m ² Calibrated Brightness |
| Contrast Ratio | 850:1 |
| Viewing Angle | 176 ^o Horizontal & Vertical |
| Palette | 14 Bit |
| Video Inputs | DVI, Display Port |
| Dimensions HxWxD (Inches) | 21.1 x 14.8 x 9.8ö |
| Weight with Stand/Base (lbs) | 24.2 lbs |
| Power Supply | Built in |
| Power Consumption | 100W Max/Less than 1W During power save |
| Compliance/Safety Standards | FCC Class B, CE, VCCI Class B, KCC, ICES-003-B, C-Tick, UL60601-1,CE,CSA Std., C22.2 No.601.1, IEC/EN60601-1, CCC, FDA 510(k) |
| Service & Support | 24/7 |
| Warranty | 3 Years |
| Other Features | Retractable Front Sensor for True Auto-Calibration, Client/Remote Administration Calibration Software included, Rear Sensor for Backlight brightness control, Digital Ambient Light Compensation, Complete Screen Luminance Uniformity Control, 14 Bit Processing for Precise Image Rendering, VESA Standard Mounting configuration, Other Mounting options available. |



DOUBLE
BLACK
IMAGING

Double Black Imaging

11005 Dover St, Suite 500
Westminster, CO 80021
Tel. 877-852-2870, 303-404-2222
Fax 303-460-0276
sales@doubleblackimaging.com
www.doubleblackimaging.com



DOUBLE
BLACK
IMAGING