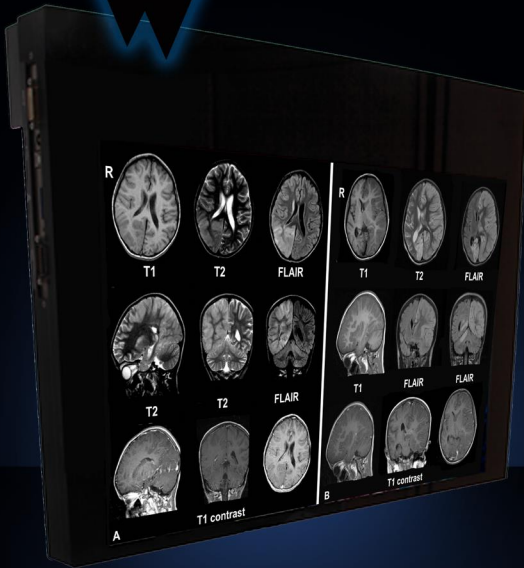


**DOUBLE
BLACK
IMAGING**

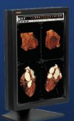
The DBI 2MP MRI Safe LCD

The DBI24-MR Safe is a 2.3 mega-pixel color LED backlit display designed for use in the MRI Suite. This is the only MRI Compatible, MR Safe display with lag free output and no interference with the scanner even when positioned at the exit of the bore.

Exceptional spacial uniformity of 2% over the central 75%, ultra high brightness of 1000 cd/m² and a cotrast ratio of 1000:1 provide outstanding image quality within the MR Suite.



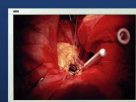
- ◆ 2MP HD Resolution (1920 x 1200)
- ◆ 24ö Color LED Backlit Display
- ◆ MR Safe in Accordance with ASTM F2503-08
- ◆ Brightness - 1000 cd/m²; Contrast Ratio - 1000:1
- ◆ Light output is synchronous to the input video signal
- ◆ Exceptional Spacial Uniformity - 2% over central 75%
- ◆ Dual DVI Inputs
- ◆ Automatic Backlight Compensation
- ◆ Full 1 Year Warranty



PACS Displays



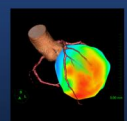
Clinical Displays



Surgical Displays



DICOMatrix



3D Imaging

DBI24- MRSafe

Description	2 Mega-Pixel Color LED H-IPS LCD with fixed 60Hz frame rate and backlight sensor
Recommended Use	For MR Compatible, MR Safe Viewing in the MR Suite
Diagonal Screen Size	24ö
# of Pixels	2.3 Mega-Pixel
Resolution	1920 x 1200
Brightness	1000 cd/m ²
Contrast Ratio	1000:1
Viewing Angle	170° Horizontal & Vertical
Palette	16.7 Million Colors
Video Inputs	Dual DVI
Dimensions (Inches)	24.4 x 17.5 x 2.8ö
Weight	Approx 37 lbs
Power Supply	External
Power Consumption	100 to 240 Vac nominal, 50 or 60Hz, 150W. Output: 5, 15 and 35 to 45 Vdc.
MR Safety	The DBI24-MRSafe is categorised as MR safe in accordance with the labelling requirements of ASTM F2503-08 (öan item that poses no known hazards in all MR environmentsö). The power supply and cables are MR conditional (öan item that has been demonstrated to pose no known hazards in a specified MR environment with specified conditions of useö).
EMC	DBI24-MRSafe has no observed effect on functional and structural MRI scans at 3T, even with screen located at exit of scanner bore, and no effect on displayed image whilst scanning. Emissions: EN55011 class B conducted & radiated, Harmonic Currents: EN61000-3-2 class A Voltage Flicker: EN61000-3-3, ESD Immunity: EN61000-4-2, level 3 contact, Perf Criteria A Radiated Immunity: EN61000-4-3, level 3, Perf Criteria A, EFT/Burst: EN61000-4-4, level 2, Perf Criteria A, Surge: EN61000-4-5, installation class 3, Perf Criteria A , Conducted immunity:EN61000-4-6, level 3, Perf Criteria A, Magnetic Field (limit applies to PSU only): EN61000-4-8, 3 A/m, Perf Criteria A, Dips & Interruptions : EN61000-4-11, 30% 10 ms, 60% 100 ms, >95% 5000 ms, Perf Criteria A, B, B, EN60601-1, Type B Equipment, Class 1
Warranty	1 year

Double Black Imaging

11005 Dover St, Suite 500
Westminster, CO 80021
Tel. 877-852-2870, 303-404-2222
Fax 303-460-0276
sales@doubleblackimaging.com
www.doubleblackimaging.com

DOUBLE
BLACK
IMAGING

DOUBLE
BLACK
IMAGING