

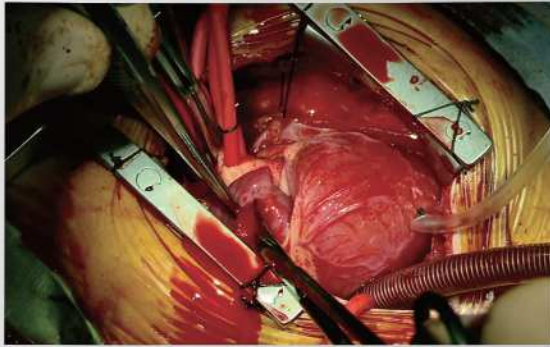
**DOUBLE
BLACK
IMAGING**

The DBI 24" Surgical LCD

DBI24S

The 24" DBI24S surgical LCD provides a superior solution to fit all stringent surgical imaging requirements. With full HD resolution, ultra high brightness and contrast, it is the monitor of choice for the OR and ER. The DBI24S delivers bold, vibrant, images even when viewed from a distance. It supports a variety of video inputs for existing and new camera technologies, eliminates costly signal conversion, image degradation and image lag. This surgical display features exceptionally fast response time necessary when viewing live video or motion.

The DBI24S is compatible with standard booms, wall, or cart mounts and have the ability to be sanitized within the OR environment.



- ◆ IPX1 Rated - Splash resistant
- ◆ Variety of Inputs - Compatible with 3G-SDI & Legacy Systems
- ◆ Bonded Protective Panels with Sealed controls
- ◆ Can be sanitized within the OR Environment
- ◆ Picture in Picture and Picture by Picture Compatible
- ◆ Full HD Resolution
- ◆ Ultra High Brightness and Contrast
- ◆ Standard Wall, Boom and Cart mounting options available
- ◆ Full 3 Year Warranty



PACS Displays



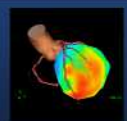
Clinical Displays



Surgical Displays



DICOMetrix



3D Imaging

DBI24S

Description	24" Surgical LCD
Recommended Modalities	Surgical, IPX1 Rated
Diagonal Screen Size	24", 16:9 Aspect Ratio
# of Pixels	2.3 Mega-Pixel
Resolution	1920 x 1200 Landscape
Brightness	400 cd/m ²
Contrast Ratio	1000:1
Viewing Angle	178° Horizontal & Vertical
Input Connectivity	DVI-I 29 pin x 1 (DVI-A/DVI-D), HDMI x1, D-Sub 15-pin mini x 1 (RGB analog), BNC x1, 4-pin Mini-Din x1, RGBS/YPbPr - BNC x5, 3G-SDI - BNC x1, RS-232, D-Sub 9-pin mini x 2 (1 x IN, 1 x OUT)
Luminance Stabilization	Embedded auto luminance stabilizer (ALS)
Diagnostic Viewing Modes	DICOM, DICOM-Clear, DICOM-Blue, Light Box, Text, User
Dimensions HxWxD (Inches)	15.9 x 22.9 x 3.8" Without Stand
Weight without Stand/Base (lbs)	17.2 lbs
Power Supply	Internal
Power Consumption	Less than 100W; Less than 2.5 W during power save
Compliance/Safety Standards	cTUVus (ANSI/AAMI ES 60601-1, CAN/CSA C22.2 No.60601-1), CB (IEC 60601-1), TUV/RH (EN 60601-1), FCC, BSMI, CCC, VCCI, RoHS, WEEE
Service & Support	24/7
Warranty	3 years on the LCD
Other Options	Mounting, Cart and other OR accessories available.

Double Black Imaging

11005 Dover St, Suite 500
Westminster, CO 80021
Tel. 877-852-2870, 303-404-2222
Fax 303-460-0276
sales@doubleblackimaging.com
www.doubleblackimaging.com

DOUBLE
BLACK
IMAGING

DOUBLE
BLACK
IMAGING