

**DOUBLE
BLACK
IMAGING**

6MP Color Auto-Calibrating LED

DBI6MP

The DBI6MP is a 6 mega-pixel high bright color LED backlit display. This 6MP large format display offers front sensors for True DICOM gray level and luminance auto-calibration.

X-CAL® Client and Remote Administration DICOM Auto-Calibration Software are included with each system at no charge. X-CAL® Client, the local workstation software will allow even individual workstations to be configured for auto-calibration without a network software piece. X-CAL® Remote Administration Server Software and the DBI6MP will allow an administrator to monitor all the displays within the enterprise, launch calibration and receive alerts if LCDs fall out of calibration or if calibration was unable to be completed.



- ◆ 6MP (3280 x 2048) Color LED Backlit Display
- ◆ Brightness - 900 cd/m²; Contrast Ratio - 800:1
- ◆ Complete Screen Luminance Uniformity Control
- ◆ Built in Front sensors and Backlight sensor
- ◆ 12 Bit gradation for Precise Image Rendering
- ◆ Digital Ambient light Compensation
- ◆ Bonded Protective Panel Optional
- ◆ Full 5 Year Warranty
- ◆ X-CAL Web Suite included



PACS Displays



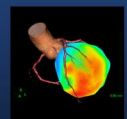
Clinical Displays



Surgical Displays



DICOMetrix



3D Imaging

DBI6MP

Description	6 Mega-Pixel Color LCD with Fixed Front Sensors, Backlight Sensor, Ambient Light Sensor.
Recommended Modalities	PACS, CR, DR, CT, MR, US
Diagonal Screen Size	29"ö
# of Pixels	6 Mega-Pixel
Resolution	3280 x 2048
Brightness	900 cd/m ² ; 450 cd/m ² Calibrated Brightness
Contrast Ratio	800:1
Viewing Angle	174° Horizontal & Vertical
Palette	14 Bit Gradation
Video Inputs	DVI and Display Port
Dimensions HxWxD (Inches)	28.95" x 23.84" x 11.89"ö
Weight with Stand/Base (lbs)	44 lbs
Power Supply	Internal
Power Consumption	205W (Max)/ 2W (Power Save)
Compliance/Safety Standards	UL60601-1, cUL2601-1, CE, IEC/EN60601-1, FCC Class B, VCCI, MIC, CCC, FDA 510(k)
Service & Support	24/7
Warranty	5 years on the LCD, Electronics and Backlight; 3 years on the graphic controller
Other Features	Front Sensor for True Auto-Calibration, Client/Remote Administration Calibration Software included, Bonded Protective Panel Optional, Rear Sensor for Backlight brightness control, Digital Ambient Light Compensation, Complete Screen Luminance Uniformity Control, 14 Bit Processing for Precise Image Rendering, VESA Standard Mounting configuration, Other Mounting options available.

Double Black Imaging

11005 Dover St, Suite 500
Westminster, CO 80021
Tel. 877-852-2870, 303-404-2222
Fax 303-460-0276
sales@doubleblackimaging.com
www.doubleblackimaging.com

