

The DBI 24" Clinical LED

DOUBLE
BLACK
IMAGING

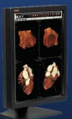
DBICL24-LED

With a slim and sleek designs, the DBICL24-LED is ideally designed for PACS review, Modality Image Viewing or as a PACS Work list Display with DICOM 3.14 compliance.

The DBICL24-LED provides multiple diagnostic modes allowing versatility throughout the hospital enterprise and are backed by DBI's industry leading warranty and service program.



- ◆ 24" 2MP Color LED Backlit LCD
- ◆ Ultra High Brightness
- ◆ Contrast Ratios - 1000:1
- ◆ Wide Viewing Angle - 178° Horizontal & Vertical
- ◆ DICOM Compliant out of the box
- ◆ Built in Backlight Stability Control
- ◆ Perfect for Clinical and Modality Imaging Applications
- ◆ Digital and Analog Inputs for a variety of uses
- ◆ Full 3 Year Warranty



PACS Displays



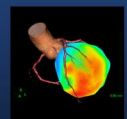
Clinical Displays



Surgical Displays



DICOMatrix



3D Imaging

DBICL24-LED

Description	24" Clinical LED Backlit LCD
Recommended Modalities	Clinical, PACS Review, Modality Imaging, CT, MR, NM, Ultrasound
Diagonal Screen Size	24", 16:10 Aspect Ratio
# of Pixels	2.3 Mega-Pixel
Resolution	1920 x 1200
Brightness	300 cd/m ² ; 225 cd/m ² Calibrated Brightness
Contrast Ratio	1000:1
Viewing Angle	178° Horizontal & Vertical
Video Input	DVI-D, Display Port, Composite, HDMI, Component
Diagnostic Viewing Modes	User, Adobe RGB, Grayscale
Dimensions HxWxD (Inches)	25.3 x 14.9 x 9.6"
Weight with Stand/Base (lbs)	33 lbs
Power Supply	Internal
Power Consumption	115W
Compliance/Safety Standards	UL60601-1, CE, CSA Std C22.2 No. 601.1, IEC/EN60601-1, FCC Class B, VCCI, KCC, CB, GoST-R, C-Tick, ICES-003B
Service & Support	24/7
Warranty	3 years on the LCD
Other Options	Calibration conformance, tracking and reporting optional with X-CAL Web, Rear Sensor for Back light brightness control, Extended Warranty optional, VESA Standard Mounting configuration, Other Mounting options available



DOUBLE
BLACK
IMAGING

Double Black Imaging

11005 Dover St, Suite 500
Westminster, CO 80021
Tel. 877-852-2870, 303-404-2222
Fax 303-460-0276
sales@doubleblackimaging.com
www.doubleblackimaging.com



DOUBLE
BLACK
IMAGING