

Display Solutions Optimized for Breast Imaging

Ideal for use with multi-modality imaging, including Mammography and Tomosynthesis, Double Black Imaging's line of Breast Imaging Displays provide clear, crisp images for diagnostic imaging.

Our Gemini Series color LED backlit display systems double the resolution and eliminate the gap between screens in multi-head display configurations. Allowing the eye to glide between images uninterrupted increases productivity and user efficiency. Our N-Series 5MP Mammo systems provide dual-head displays angled inward for increased user comfort.

The entire fleet of Double Black Imaging Breast Imaging displays are equipped with built in front sensors for hands-free automatic DICOM 3.14 calibration, backlight sensors to maintain stability over time, ambient light sensors, auto-report generation, and non-conformance alerts via the web.

Additional user friendly features include auto-dimming capability, image pinpointing, cursor wrap, and cursor genie functions – improving workflow and enhancing the user experience.

About Double Black Imaging and our Image Systems Display Division

We are proud to be the largest display supplier and calibration software developer, creating 100% of our software and performing 100% display system integration in the USA.

Our team has a renowned history of providing the industry's finest customer service, continually acknowledged by thousands of users and IT Professionals who put their trust in us every day.

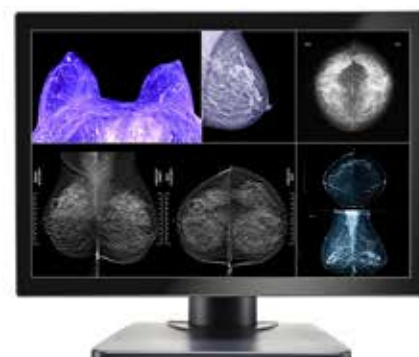
We are dedicated to developing innovative imaging solutions that greatly improve image quality and stability. Making imaging more efficient and reducing cost of ownership are DBI Cornerstones.



N Series 5MP Dual Display System



Gemini 12MP

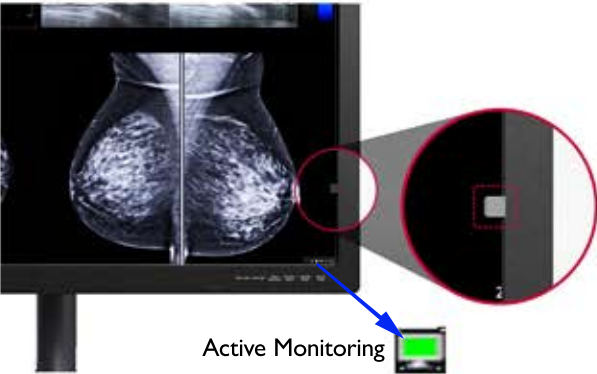


Gemini 8MP



DOUBLE BLACK
IMAGING

Automatic DICOM Calibration with CFS™



Built in front sensors eliminate the need for bulky photometers and manual, time-consuming calibration and conformance testing. All DBI displays are bundled with the CFS™ Calibration software suite for automatic DICOM calibration, conformance testing, report generation, MQSA testing, reporting, and non-conformance alerts via the web.

A Division of Double Black Imaging

CFS Workstations

CFS Displays

X-CAL

CFS Home

Global Changes

Global Reports

Test History

QCQA History

In Full Compliance (6)

Station In Alert (0)

Out of Compliance (1)

Station Offline (1)

Work Station Filters

Icon: <All> Workgroup: <All>

Icon	Attached Monitors	Most Recent Activity	Workgroup	Work Station	Network ID
	1: In Full Compliance	7 weeks ago on 06/09/21	WHQ/CRNorth	N/A	DB42W106402-HP
	1: In Full Compliance	3 weeks ago on 07/07/21	DB/WH/RoyEast	N/A	DBZ620PROC-HP
	1: In Full Compliance	Current	DB/WH/RoyNorth	2UA03307C9	DESKTOP-M2QC78M
	1: In Full Compliance	36 minutes ago	DB/David Office	N/A	DPPCW8
	1: In Full Compliance	Current	DB/WH/RoyWest	2UA2520MBC	QCVUE
	1: In Full Compliance	2 hours ago	DB/WH/RoySouth	2UA13209WN	USER-HP

A Division of Double Black Imaging

CFS Workstations

CFS Displays

X-CAL

CFS Home

Global Changes

Global Reports

Test History

QCQA History

Visual Acceptance Reports

MQSA Summary Reports

Hours Reports

A Division of Double Black Imaging

CFS Workstations

CFS Displays

X-CAL

CFS Home

Global Changes

Global Reports

Test History

QCQA History

CFS DICOM Report

Facility Information

Computer Information

Display 1 Information

Display 2 Information

Visual Acceptance Graphs

A Division of Double Black Imaging

CFS Workstations

CFS Displays

X-CAL

CFS Home

Global Changes

Global Reports

Test History

QCQA History

Test History

Test Type: All Tests

Start Date: 2021-07-01

Stop Date: 2021-07-01

Page: 1 of 1

ID	Date/Time	Monitor	Station	Value	Sta	P/P
1	2021-07-15 16:01	AM070L-B00001	AM070L-B00001	0.98%	Pass	
2	2021-07-15 16:01	CK080C-B00002	AM070L-B00001	0.23%	Pass	
3	2021-07-15 16:01	AM070L-B00003	AM070L-B00001	0.23%	Pass	
4	2021-07-15 16:01	AM070L-B00004	AM070L-B00001	0.23%	Pass	
5	2021-07-15 16:01	AM070L-B00005	AM070L-B00001	0.23%	Pass	
6	2021-07-15 16:01	AM070L-B00006	AM070L-B00001	0.23%	Pass	
7	2021-07-15 16:01	AM070L-B00007	AM070L-B00001	0.23%	Pass	
8	2021-07-15 16:01	AM070L-B00008	AM070L-B00001	0.23%	Pass	
9	2021-07-15 16:01	AM070L-B00009	AM070L-B00001	0.23%	Pass	
10	2021-07-15 16:01	AM070L-B00010	AM070L-B00001	0.23%	Pass	

Lighting to Reduce Eye Strain

Each Double Black Imaging Breast Imaging system is equipped with private ambient lights to illuminate the reading station desk and/or wall. The adjustable built in lighting system allows the radiologist to work effectively and comfortably while reducing fatigue and eye strain.

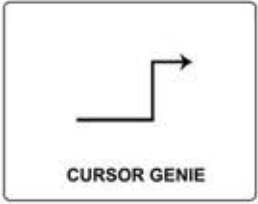
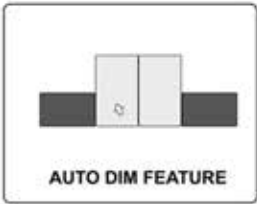


Productivity Tool Kit

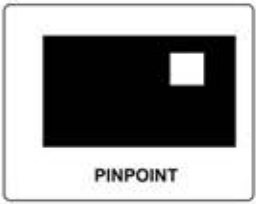
The inclusive CFS Productivity toolkit consists of several utilities designed to improve User workflow, enhance visual clarity, reduce distraction, minimize hand strain, fatigue, frustration, and ultimately diminish visual strain.



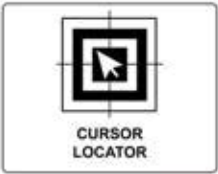
Eliminates distractions and eye strain from bright neighboring monitors



Saves time and the frustration of a user's cursor getting stuck in the corners of a display



Enables the user to concentrate on key areas of interest



Rapidly locates the cursor and allows the user return to work quickly without frustration

Allows the user to quickly move between screens in a multi-display environment, reducing hand strain

Ergonomically Designed

Each display is ergonomically designed to reduce strain and fatigue caused by long hours at the workstation. This stand allows users to freely adjust the tilt, height, and swivel.



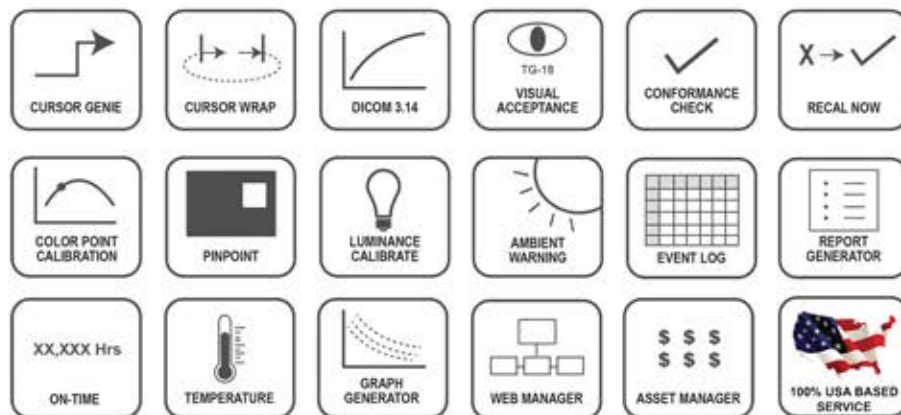
Display base and design differ between models

Breast Imaging Displays - Technical Specifications

Specifications	8G	5MP Color	12G
Size and Aspect Ratio	31.1" / 16:9 Aspect Ratio	21.3" / 4:3 Aspect Ratio	31" / 3:2 Aspect Ratio
Active Display Area H x V	27.48 x 14.49"	13.30 x 16.63"	25.75 x 17.125"
Resolution	4096 x 2160 (8MP)	2048 x 2560 (5MP)	4200 x 2800 (12MP)
Brightness	850 cd/m ² ; 420-500cd/m ² Calibrated	800 cd/m ² ; 420-500cd/m ² Calibrated	1080 cd/m ² ; 420-600cd/m ² Calibrated
Contrast Ratio	1450:1	1000:1	1500:1
Look Up Table	14-bit LUT		
Response Time	8ms Typ.	14 rising; 11ms falling Typ.	14ms (Off); 5ms (Fast Setting)
Pixel Pitch	0.1704 x 0.1704 mm	0.165 x 0.165 mm	0.1554 x 0.1554 mm
Built In Sensors	Front Sensor, Backlight Sensor, Ambient Light Sensor, Temperature Sensor (8MP 5MP), Presence Sensor (12MP)		
Tilt/Swivel/Height Adjustment	-5 to 15°; +/- 45°; 80mm	-3 to 15°; +/- 20°; 110mm	-5 to 15°; +/- 15°; 110mm
Panel Technology	TFT AMLCD IPS Color, LED Backlit		
Viewing Angle	178° Typ.		
Video Input / USB	DisplayPort (2), DVI-D (2), USB	DisplayPort, DVI-D, USB (1 up, 3 down)	DisplayPort (2), USB (1 up, 3 down)
Power Supply	External for Added Reliability. AC Input to power brick: 100-240V		
Power Consumption	160w/ Power Save <5w	100w max/ Power save ~2w	80w max/ Power save <0.3w
Operating Temperature	0° to 40°C (32° to 104°F)		
Operational Humidity	15% - 80%		
Storage Temperature	-20° to +60°C (-4° to + 140°F)		
Weight w/ stand (approx)	42 lbs w/stand; 31 lbs w/o stand	24.3 lbs w/stand; 16 lbs w/o stand	30.9 lbs w/stand; 23.6 w/o stand
Dimensions (W x H x D) w/stand full height	29.7" x 22.6" x 9.8" w/stand 29.7" x 18.2" x 4.5 w/o stand	15.4" x 20.5" x 13.7" w/stand 15.4" x 18.75" x 10" w/o stand	27.7" x 26.1" x 11 w/stand 27.7" x 19.7" x 3.3" w/o stand
Mounting Options	100 x 100 mm VESA		
Safety & Emissions	All: EN60601-1, ANSI/AAMI ES 60601-1, CAN/CAS C22.2 No. 60601, IEC/EN 60601-1, FDA 510(k) for Mammo/Tomo. 8MP: GB493.1, CE acc to MDD 93/42/EEC (Class 1), IP20. 5MP: FCC Class B, VCCI, KC, ICES, C-Tick. 12MP: FCC (Part 15 Class A), RoHS, REACH, WEEE, IEC 60950-1/CISPR32/35		
Warranty	5-Year warranty with Advance Hot Swap		
PACS Application	Multi-Modality PACS, CR/DR CT MRI US DSI DSA PET/CT Image Fusion X-Ray Nuclear Medicine		
Mammography Application	Digital Mammography, Digital Breast Tomosynthesis		

Calibration Feedback System – CFS™

- Our industry leading CFS™ software - Client and Web Manager
- Ensures calibration and confidence to DICOM 3.14
- Provides tools to enhance visibility, efficiency, workflow
- Enables performance monitoring and asset management
- Accurate calibration of both color and gray shades
- CFS™ Software comes standard with every G-Series display



Hassle-Free Services & Support

Overcome technical challenges with our team of experienced engineers and technicians. Whether it's a simple answer or on-site troubleshooting, we can help any time, every time. Accurate and consistent presentation of images is a critical requirement for radiology displays.



DBI Service Desk
Comprehensive
Technical Support

Hot Swap
Extended Warranty &
Advanced Replacement Program

