



3MP LED Backlit Display Optimized for Diagnostic Imaging

Space and Productivity Multiplied

Our C3MPL, 3MP color LED backlit display system, features exceptionally high brightness, high contrast ratio, sleek, minimal side bezels decreasing space between images and its auto-calibration capability ensures consistent diagnostic quality images over years of use. Confidence is high and workflow is enhanced with our CFS Calibration Software Suite, productivity tools, wall and desk space lighting, and wide viewing angle.

This 3MP Color LED Backlit display is equipped with a built in front sensor for hands-free automatic DICOM 3.14 calibration, a backlight sensor to maintain stability over time, ambient light sensor, a presence sensor, auto-report generation and non-conformance alerts via the web.

Additional user friendly features include auto-dimming capability, image pinpointing, cursor wrap, and cursor genie functions – improving workflow and enhancing the user experience.

About Double Black Imaging and our Image Systems Display Division

We are proud to be the largest display supplier and calibration software developer, creating 100% of our software and performing 100% display system integration in the USA.

Our team has a renowned history of providing the industry's finest customer service, continually acknowledged by thousands of users and IT Professionals who put their trust in us every day.

We are dedicated to developing innovative imaging solutions that greatly improve image quality and stability. Making imaging more efficient and reducing costs are the cornerstones of what DBI stands for.



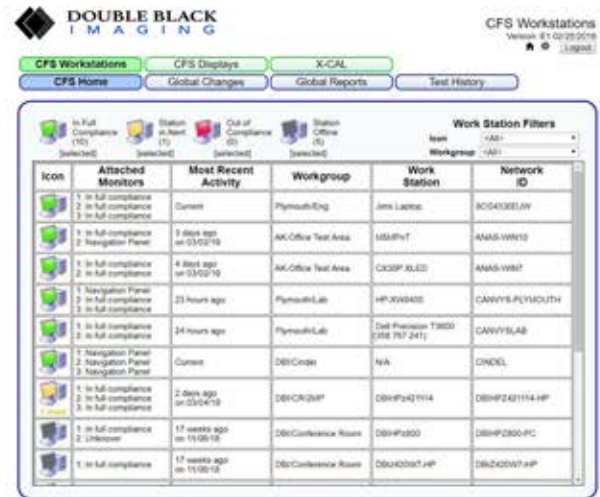
Automatic DICOM Calibration with CFS™



Built in front sensors eliminate the need for bulky photometers and manual, time-consuming calibration and conformance testing. All DBI displays are bundled with the CFS™ Calibration software suite for automatic DICOM calibration, conformance testing, report generation, MQSA testing, reporting and non-conformance alerts via the web.

CFS™ Calibration Software Suite:

- Ensures compliance to the DICOM 3.14 Standard
- Includes Local client and CFS WebManager
- Included with all DBI Display Solutions
- Email Alerting for proactive workstation maintenance
- In depth reporting tools including MQSA, NYC, NYS and Joint Commission specific reports
- Developed by Double Black Imaging 100% in the USA
- Includes Productivity Toolkit



Lighting to Reduce Eye Strain

The C3MPL is equipped with built in private ambient lights to illuminate the reading station desk and/or wall. The adjustable built in lighting system allows the radiologist to work effectively and comfortably while reducing fatigue and eye strain.



Display Bundle Options



Take Advantage of our direct relationships for workstations. DBI will preconfigure all displays, graphic controllers and calibration software prior to shipment.



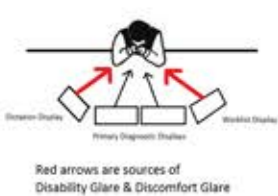
Ergonomic Seating
Reduces back pain and improves productivity by promoting proper alignment.



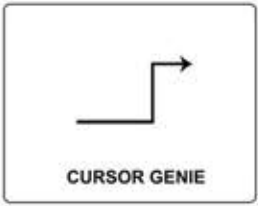
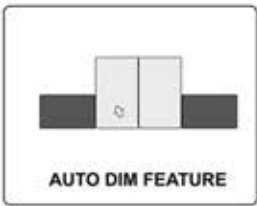
Ergonomic Workstation options include:
Configurable workstations, Sit to stand Modules, Monitor mounts and more!

Productivity Tool Kit

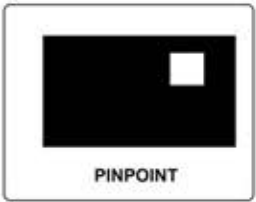
The inclusive CFS Productivity toolkit consists of several utilities designed to improve User workflow, enhance visual clarity, reduce distraction, minimize hand strain, fatigue, frustration, and ultimately diminish visual strain.



Eliminates distractions and eye strain from bright neighboring monitors



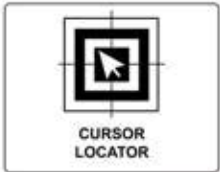
Saves time and the frustration of a user's cursor getting stuck in the corners of a display



Enables the user to concentrate on key areas of interest



Allows the user to quickly move between screens in a multi-display environment, reducing hand strain



Rapidly locates the cursor and allows the user return to work quickly without frustration

Ergonomically Designed

The C3MPL is ergonomically designed to reduce strain and fatigue caused by long hours at the workstation. This stand allows users to freely adjust the tilt, height, and swivel.



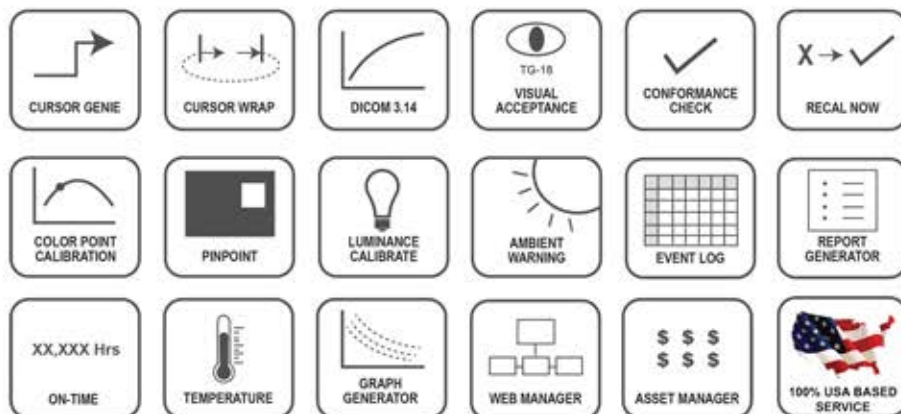
3MP Color Display System - Technical Specifications



| Specifications | | C3MPL |
|-------------------------------|--|-------|
| Size and Aspect Ratio | 21.3"; 3:4 Aspect Ratio | |
| Active Display Area H x V | 12.875" x 17.063" | |
| Resolution | 1536 x 2048 (3MP) | |
| Brightness | 1100 cd/m ² Typ.; 350-600 cd/m ² Calibrated Brightness Recommended | |
| Contrast Ratio | 1800:1 Typ. | |
| Look Up Table | 10-Bit Color | |
| Response Time | 5 ms (GtG at Faster) | |
| Pixel Pitch | 0.2115mm x 0.2115mm | |
| Built In Sensors | Front Sensor, Backlight Sensor, Ambient Light Sensor, Presence Sensor | |
| Display Modes | Multi-resolution Mode (3/2MP), Focus View Mode, Light Box Mode, Reader Mode, Pathology Mode | |
| Panel Technology | TFT AMLCD IPS Color, LED Backlit | |
| Surface Treatment | Anti-Reflective, 3H | |
| DICOM Calibration | Yes with Built in Front Sensors Via CFS. Includes auto-reporting, alerting and CFS Web Manager | |
| Applications | Multi-Modality PACS, CR/DR, CT, MRI, US, DSI, DSA, PET/CT, Image Fusion, X-Ray, Nuclear Medicine | |
| Viewing Angle | 178° Typical | |
| Video Input / USB (1up 1down) | DisplayPort (2), USB (2 Up, 2 Down) | |
| Power Supply | External for added reliability. AC Input to power brick: 100-240V | |
| Tilt/Pivot/Height Adjustment | -5 to + 20° Tilt +/- 90° Pivot 110mm Height Adjustment | |
| Weight w/ stand (approx) | 15.4 lbs w/Stand; 11.1 lbs w/o Stand | |
| Dimensions (W x H x D) | 13.5" x 25.2" x 9.24" With Stand 13.5" x 19.1" x 2.9" Without Stand | |
| Mounting Options | 100 x 100 mm VESA | |
| Safety & Emissions | AAMI ES60601-1, ANSI, CAN/CSA C22.2 No. 60601-1, cUL, DDC/CI, EN 55032, EN 606011-1, EN 606601-1-2, EN 60950-1, EN55024, FCC, FCC Part 15 A, GMP, IEC 55024, IEC 55032, IEC 60601-1, IEC 60601-1-1-2, IEC 60950-1, ISO 13485, KGMP, MFDS, REACH, RoHS, WEEE, FDA 510(k) Class II | |
| Warranty | 5-Year Warranty with Hot Swap | |

Calibration Feedback System – CFS™

- Our industry leading CFS™ software - Client and Web Manager
- Ensures calibration and confidence to DICOM 3.14
- Provides tools to enhance visibility, efficiency, workflow
- Enables performance monitoring and asset management
- Accurate calibration of both color and gray shades
- CFS™ Software comes standard with every G-Series display



Hassle-Free Services & Support

Overcome technical challenges with our team of experienced engineers and technicians. Whether it's a simple answer or on-site troubleshooting, we can help any time, every time. Accurate and consistent presentation of images is a critical requirement for radiology displays.



DBI Service Desk
Comprehensive
Technical Support

Hot Swap
Extended Warranty &
Advanced Replacement Program

