



## Large Format Display Optimized for Breast Imaging

### Space and Productivity Multiplied

Our Gemini Series color LED systems double the resolution and eliminate the gap between screens in multi-head display configurations. Allowing the eye to seamlessly glide between images uninterrupted increases productivity and user efficiency. Complete with advanced auto-calibration technology, these wide-screen models enable multi-modality imaging from a single display including digital breast imaging on this 12MP model.

The entire Gemini series of large format, wide-screen displays are equipped with built in front sensors for hands-free automatic DICOM 3.14 calibration, backlight sensors to maintain stability over time, ambient light sensors, a presence sensor on the 12MP, auto-report generation and non-conformance alerts via the web.

Additional user friendly features include auto-dimming capability, image pinpointing, cursor wrap, and cursor genie functions – improving workflow and enhancing the user experience.

### About Double Black Imaging and our Image Systems Display Division

We are proud to be the largest display supplier and calibration software developer, creating 100% of our software and performing 100% display system integration in the USA.

Our team has a renowned history of providing the industry's finest customer service, continually acknowledged by thousands of users and IT Professionals who put their trust in us every day.

We are dedicated to developing innovative imaging solutions that greatly improve image quality and stability. Making imaging more efficient and reducing costs are the cornerstones of what DBI stands for.



## Large Format Display Optimized for Breast Imaging



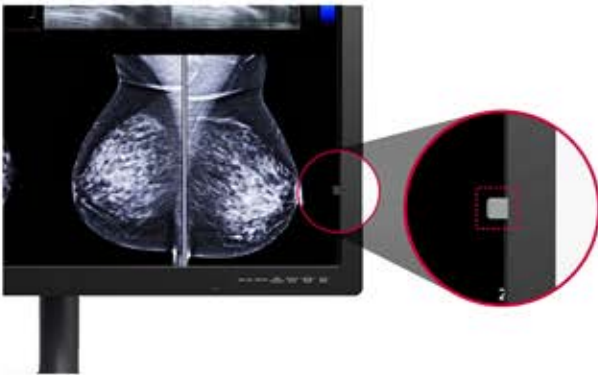
The 31" Gemini 12MP replaces a dual head set of 5MP Displays, allowing seamless diagnostic reading of Mammo and Tomo images. Ultra-high brightness and a wide viewing angle ensure images can be viewed clearly and from any angle without distortion.

## Multi-Modality Imaging

Optimizing workflow by enabling all modalities to be read at one workstation is a key feature of the Gemini 12MP. The Gemini 12MP precisely accommodates the spectrum of modality resolutions by toggling between 12MP for Breast imaging including Tomo, and 6MP for all PACS modalities.



## Automatic DICOM Calibration with CFS™



Built in front sensors eliminate the need for bulky photometers and manual, time-consuming calibration and conformance testing. All DBI displays are bundled with the CFS™ Calibration software suite for automatic DICOM calibration, conformance testing, report generation, MQSA testing, reporting and non-conformance alerts via the web.

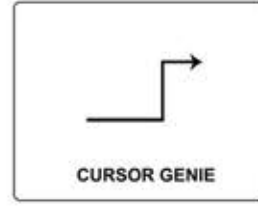
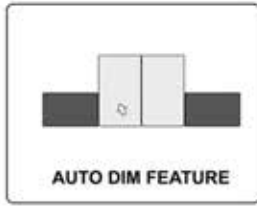
## Lighting to Reduce Eye Strain

The Gemini 12MP is equipped with built in private ambient lights to illuminate the reading station desk and/or wall. The adjustable built in lighting system allows the radiologist to work effectively and comfortably while reducing fatigue and eye strain.



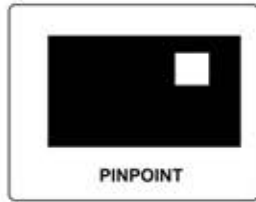
# Productivity Tool Kit

The inclusive CFS Productivity toolkit consists of several utilities designed to improve User workflow, enhance visual clarity, reduce distraction, minimize hand strain, fatigue, frustration, and ultimately diminish visual strain.



Eliminates distractions and eye strain from bright neighboring monitors

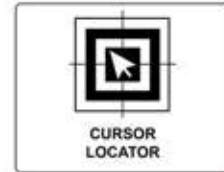
Saves time and the frustration of a user's cursor getting stuck in the corners of a display



Enables the user to concentrate on key areas of interest



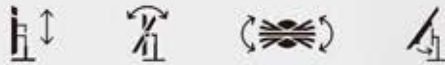
Allows the user to quickly move between screens in a multi-display environment, reducing hand strain



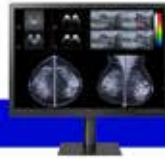
Rapidly locates the cursor and allows the user return to work quickly without frustration

## Ergonomically Designed

The Gemini 12MP is ergonomically designed to reduce strain and fatigue caused by long hours at the workstation. This stand allows users to freely adjust the tilt, height, and swivel.



# G-Series - Technical Specifications

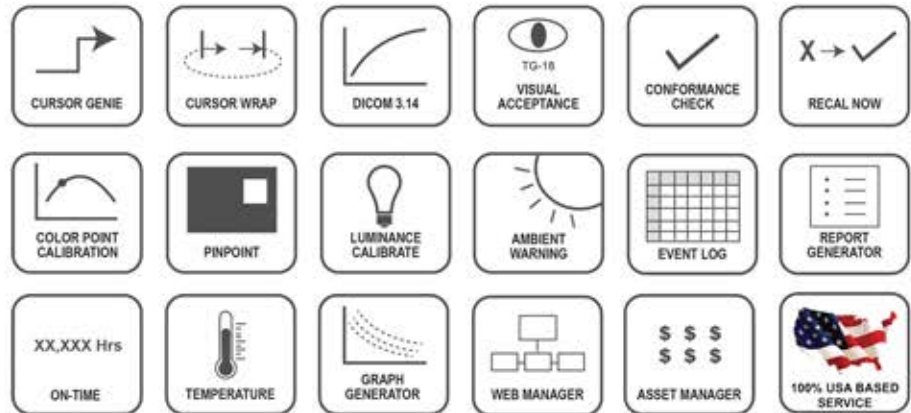


12G

Specifications	
Size and Aspect Ratio	31"; 3:2 Aspect Ratio
Active Display Area H x V	25.75" x 17.125"
Resolution	4200 x 2800 (12MP)
Brightness	1080 cd/m <sup>2</sup> Typ. with Uniformity on; 600 cd/m <sup>2</sup> Calibrated Brightness
Contrast Ratio	1500:1 Typ.
Look Up Table	14-Bit LUT
Response Time	14 ms (Off- setting); 5 ms (faster-setting)
Pixel Pitch	0.1554mm x 0.1554mm
Built In Sensors	Front Sensor, Backlight Sensor, Ambient Light Sensor, Presence Sensor
Display Modes	Multi-resolution Mode (12/6MP), Focus View Mode, Light Box Mode, Pathology Mode
Panel Technology	TFT AMLCD IPS Color, LED Backlit
Surface Treatment	Anti-Reflective, 3H
DICOM Calibration	Yes with Built in Front Sensors Via CFS. Includes MQSA reporting, alerting and CFS Web Manager
Applications	Mammo, Tomo, Multi-Modality PACS, CR/DR, CT, MRI, US, DSI, DSA, PET/CT, Image Fusion, X-Ray, Nuclear Medicine
Viewing Angle	178° Typical
Video Input / USB (1up 1down)	DisplayPort (2), USB (1 Up, 3 Down)
Power Supply	External for added reliability. AC Input to power brick: 100-240V
Tilt/Swivel/Height Adjustment	-5 to + 15° Tilt   +/- 15° Swivel   110mm Height Adjustment
Weight w/ stand (approx)	30.9 lbs w/Stand; 23.6 lbs w/o Stand
Dimensions ( W x H x D )	27.7" x 26.1" x 11" With Stand 27.7" x 19.7" x 3.3" Without Stand
Mounting Options	100 x 100 mm VESA
Safety & Emissions	IEC(IEC 60601-1 / IEC 60601-1-2), EN(EN60601-1 / EN 60601-1-2), IEC(IEC 60950-1 / CISPR32 / 35), EN(EN 60950-1 / EN55032, 55035), cUL (ANSI/AAMI ES 60601-1, CSA CAN/CSA-C22.2 NO. 60601-1), FCC (FCC pat 15 Class A), RoHS, REACH, WEEE, FDA 510(k) (Class II)
Warranty	5-Year Warranty with Hot Swap is standard

## Calibration Feedback System – CFS™

- Our industry leading CFS™ software - Client and Web Manager
- Ensures calibration and confidence to DICOM 3.14
- Provides tools to enhance visibility, efficiency, workflow
- Enables performance monitoring and asset management
- Accurate calibration of both color and gray shades
- CFS™ Software comes standard with every G-Series display



## Hassle-Free Services & Support

Overcome technical challenges with our team of experienced engineers and technicians. Whether it's a simple answer or on-site troubleshooting, we can help any time, every time. Accurate and consistent presentation of images is a critical requirement for radiology displays.



**DBI Service Desk**  
Comprehensive  
Technical Support

**Hot Swap**  
Extended Warranty &  
Advanced Replacement Program

