



5MP LED Backlit Display Optimized for Digital Breast Imaging

## Advanced Imaging for Breast Health

Our C5MPL, 5MP color LED system is designed specifically for mammography and tomosynthesis, offering exceptionally high brightness and contrast ratios for superior image clarity. Ambient wall and workspace lighting reduces eye strain, while wide viewing angles ensures consistent image representation from any position. The sleek, minimal side bezels reduce the space between images, while the embedded front, backlight and ambient sensors for auto-calibration ensure consistent diagnostic quality over years of use.

Diagnostic accuracy is maximized and workflow streamlined with our CFS Calibration Software Suite. CFS includes a local agent, on site or cloud based web-management, reporting, alerting, and advanced productivity tools.

Additional user-friendly features include auto-dimming capability, image pinpointing, cursor wrap, and cursor genie functions—enhancing workflow and improving the overall user experience in mammography and tomosynthesis.

## About Double Black Imaging

We are proud to be the largest display supplier and calibration software developer, creating 100% of our software and performing 100% display system integration in the USA.

Our team has a renowned history of providing the industry's finest customer service, continually acknowledged by thousands of users and IT Professionals who put their trust in us every day.

We are dedicated to developing innovative imaging solutions that greatly improve image quality and stability. Making imaging more efficient and reducing costs are the cornerstones of what DBI stands for.



**DOUBLE BLACK**  
IMAGING

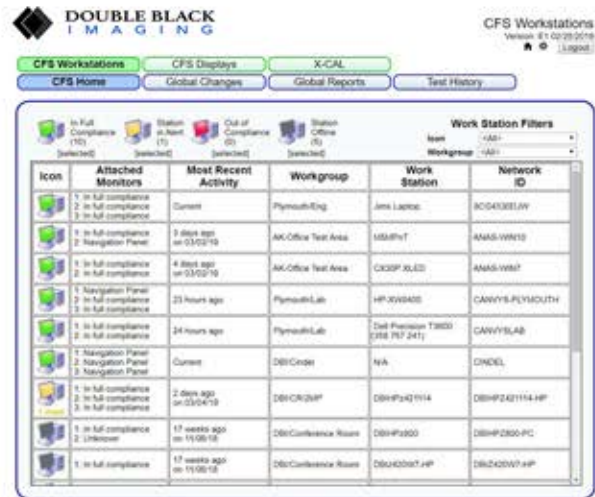
# Automatic DICOM Calibration with CFS™



Built in front sensors eliminate the need for bulky photometers and manual, time-consuming calibration and conformance testing. All DBI displays are bundled with the CFS™ Calibration software suite for automatic DICOM calibration, conformance testing, report generation, MQSA testing, reporting and non-conformance alerts via the web.

## CFS™ Calibration Software Suite:

- Ensures compliance to the DICOM 3.14 Standard
- Includes Local client and CFS WebManager
- Included with all DBI Display Solutions
- Email Alerting for proactive workstation maintenance
- In depth reporting tools including MQSA, NYC, NYS and Joint Commission specific reports
- Developed by Double Black Imaging 100% in the USA
- Includes Productivity Toolkit



## Lighting to Reduce Eye Strain

The C5MPL is equipped with built in private ambient lights to illuminate the reading station desk and/or wall. The adjustable built in lighting system allows the radiologist to work effectively and comfortably while reducing fatigue and eye strain.



## Display Bundle Options



**Take Advantage of our direct relationships for workstations.** DBI will preconfigure all displays, graphic controllers and calibration software prior to shipment.



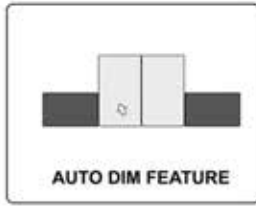
**Ergonomic Seating** Reduces back pain and improves productivity by promoting proper alignment.



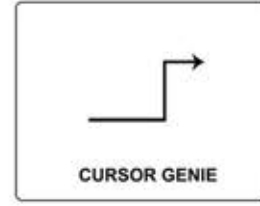
**Ergonomic Workstation options include:** Configurable workstations, Sit to stand Modules, Monitor mounts and more!

# Productivity Tool Kit

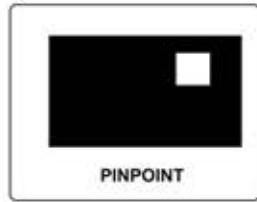
The inclusive CFS Productivity toolkit consists of several utilities designed to improve User workflow, enhance visual clarity, reduce distraction, minimize hand strain, fatigue, frustration, and ultimately diminish visual strain.



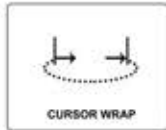
Eliminates distractions and eye strain from bright neighboring monitors



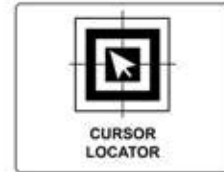
Saves time and the frustration of a user's cursor getting stuck in the corners of a display



Enables the user to concentrate on key areas of interest



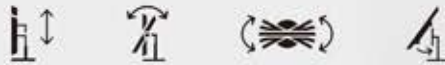
Allows the user to quickly move between screens in a multi-display environment, reducing hand strain



Rapidly locates the cursor and allows the user return to work quickly without frustration

## Ergonomically Designed

The C5MPL is ergonomically designed to reduce strain and fatigue caused by long hours at the workstation. This stand allows users to freely adjust the tilt, height, and swivel.





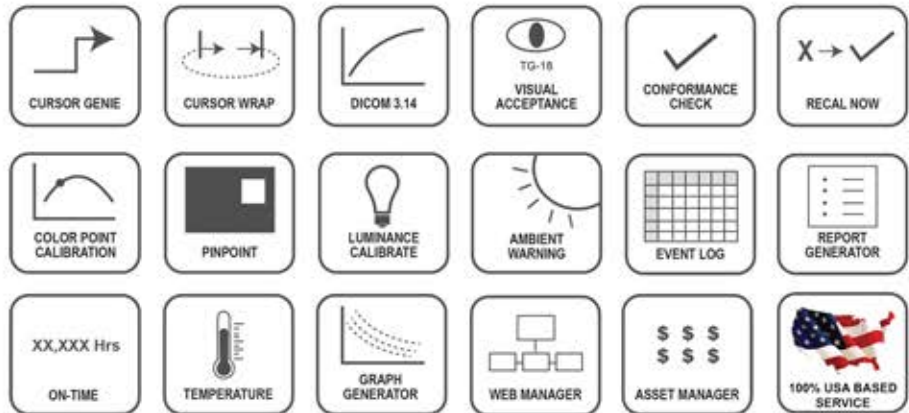
# 5MP Color System - Technical Specifications



Specifications		C5MPL - For Mammography and Tomosynthesis
Size and Aspect Ratio	21.3"; 4:5 Aspect Ratio	
Active Display Area H x V	12.875" x 17.063"	
Resolution	2048 x 2560 Portrait; 2560 x 2048 Landscape	
Brightness	1100 cd/m <sup>2</sup> Typ.; 420-600 cd/m <sup>2</sup> Calibrated Brightness Recommended	
Contrast Ratio	1800:1 Typ.	
Look Up Table	10-Bit Color	
Response Time	5 ms (GtG at Faster)	
Pixel Pitch	0.165mm x 0.165mm	
Built In Sensors	Front Sensor, Backlight Sensor, Ambient Light Sensor, Presence Sensor	
Display Modes	Multi-resolution Mode (5MP/3MP/2MP), Focus View Mode, Light Box Mode, Reader Mode, Pathology Mode	
Ambient Lighting	Built in Wall and Workspace Lighting	
Surface Treatment	Anti-Reflective	
DICOM Calibration	Yes with Built in Front Sensors Via CFS. Includes auto-reporting, alerting and CFS Web Manager	
Applications	Multi-Modality PACS, CR/DR, CT, MRI, US, DSI, DSA, PET/CT, Image Fusion, X-Ray, Nuclear Medicine, Mammo/Tomo	
Viewing Angle	178° Typical	
Video Input / USB	Display Port (2), DVI x 1 (Dual link), USB (2 Up, 2 Down)	
Power Supply	External for added reliability. AC Input to power brick: 100-240V	
Tilt/Pivot/Height Adjustment	-5 to + 20° Tilt   +/- 90° Pivot   110mm Height Adjustment	
Weight w/ stand (approx)	17.3 lbs w/Stand; 12.01 lbs w/o Stand	
Dimensions ( W x H x D )	14.4" x 24.97" x 9.19" With Stand 14.4" x 18.6" x 3.07" Without Stand	
Mounting Options	100 x 100 mm VESA	
Safety & Emissions	IEC (IEC 60601-1/IEC 60601-1-2), EN (EN 60601-1/EN 60601-1-2), IEC (IEC 60950-1 & IEC 62368-1 / CISPR 32, 35), EN (EN 62368-1 / EN 55032, 55035), cUL (ANSI/AAMI ES 60601-1, CSA CAN/CSA-C22.2 NO. 60601-1), CE MDR, ISO13485, RoHS, REACH, WEEE, MFDS, FDA 510(k) Class II	
Warranty	5-Year Warranty with Hot Swap	

## Calibration Feedback System – CFS™

- Our industry leading CFS™ software - Client and Web Manager
- Ensures calibration and confidence to DICOM 3.14
- Provides tools to enhance visibility, efficiency, workflow
- Enables performance monitoring and asset management
- Accurate calibration of both color and gray shades
- CFS™ Software comes standard with every G-Series display



## Hassle-Free Services & Support

Overcome technical challenges with our team of experienced engineers and technicians. Whether it's a simple answer or on-site troubleshooting, we can help any time, every time. Accurate and consistent presentation of images is a critical requirement for radiology displays.



**DBI Service Desk**  
Comprehensive  
Technical Support

**Hot Swap**  
Extended Warranty &  
Advanced Replacement Program

