



## 8.2MP LED Backlit Display for Pathology Imaging

### **Precision meets Clarity: Transforming Digital Pathology**

Digital pathology is experiencing significant growth as a result of technological advancements, increased adoption, and its critical role in improving diagnostic accuracy. Consistent display performance and vibrant accurate color representation are critical to Whole Slide Imaging. The DBI PA27 and PA27T displays have built in front sensors and stabilization technology to ensure accurate image representation, color gamma and maintain luminance stability over time.

The DBI PA27 and PA27T (Touch) are high-bright, 8.2MP LED backlit displays designed specifically for use in Digital Pathology, also referred to as Whole Slide Imaging. CFS Calibration Software suite enables sRGB calibration, playing a vital role in maintaining accurate color representation, diagnostic confidence, and allows remote reporting, alerting and calibrations via the Web.

The DBI PA27 and PA27T include a 5 year warranty with industry leading service.

### **About Double Black Imaging and our Image Systems Display Division**

We are proud to be the largest display supplier and calibration software developer, creating 100% of our software and performing 100% display system integration in the USA.

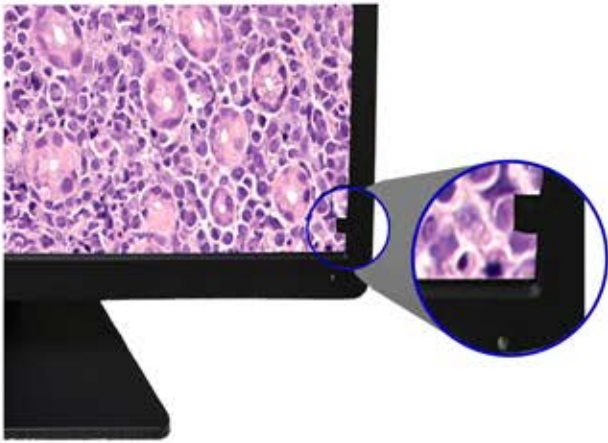
Our team has a renowned history of providing the industry's finest customer service, continually acknowledged by thousands of users and IT Professionals who put their trust in us every day.

We are dedicated to developing innovative imaging solutions that greatly improve image quality and stability. Making imaging more efficient and reducing costs are the cornerstones of what DBI stands for.



**DOUBLE BLACK**  
I M A G I N G

# Automatic sRGB Calibration with CFS™



Built in front sensors eliminate the need for bulky photometers and manual, time-consuming calibration and conformance testing. All DBI displays are bundled with the CFS™ Calibration software suite for automatic sRGB and Luminance calibration, conformance testing, report generation, and non-conformance alerts via the web.

## CFS™ Calibration Software Suite:

- Ensures compliance with sRGB Standards
- Includes Local client and CFS WebManager
- Included with all DBI Display Solutions
- Email Alerting for proactive workstation maintenance
- In depth reporting tools
- Developed by Double Black Imaging 100% in the USA
- Includes Productivity Toolkit

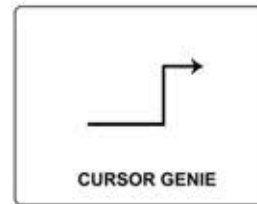
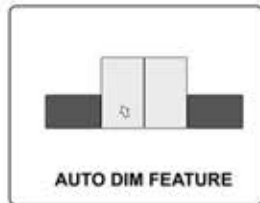
Icon	Attached Monitors	Most Recent Activity	Workgroup	Work Station	Network ID
	1. In full compliance 2. In full compliance 3. In full compliance	Current	PlymouthEng	Jim Laptop	ICG43300.WV
	1. In full compliance 2. In full compliance 3. In full compliance	3 days ago on 13/02/19	AK-Office Test Area	MS04PCT	ANAS-WW10
	1. In full compliance 2. In full compliance 3. In full compliance	4 days ago on 13/02/19	AK-Office Test Area	COOP XLED	ANAS-WW1
	1. Navigation Panel 2. In full compliance 3. In full compliance	23 hours ago	PlymouthLab	HP-K205400	CANVYS-PLYMOUTH
	1. In full compliance 2. In full compliance 3. In full compliance	24 hours ago	PlymouthLab	Dell Precision T3600 (336.757.241)	CANVYSLAB
	1. Navigation Panel 2. Navigation Panel 3. Navigation Panel	Current	DBICentral	NA	CANDEL
	1. In full compliance 2. In full compliance 3. In full compliance	2 days ago on 13/04/19	DBICON2MP	DBI-Px21114	DBI-Px21114-HP
	1. In full compliance 2. In full compliance 3. In full compliance	17 weeks ago on 11/05/18	DBI-Conference Room	DBI-Px800	DBI-PC200-PC
	1. In full compliance 2. In full compliance 3. In full compliance	17 weeks ago on 11/05/18	DBI-Conference Room	DBI-K20547-HP	DBI-K20547-HP

## Productivity Tool Kit

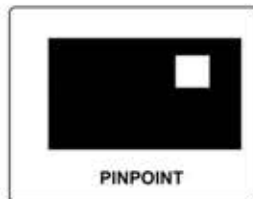
The inclusive CFS Productivity toolkit consists of several utilities designed to improve User workflow, enhance visual clarity, reduce distraction, minimize hand strain, fatigue, frustration, and ultimately diminish visual strain.



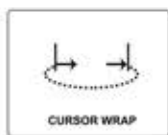
Eliminates distractions and eye strain from bright neighboring monitors



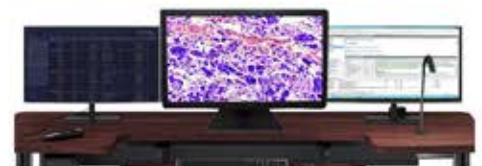
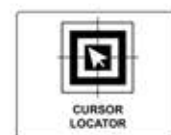
Saves time and the frustration of a user's cursor getting stuck in the corners of a display



Enables the user to concentrate on key areas of interest

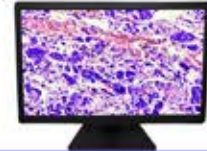


Allows the user to quickly move between screens in a multi-display environment, reducing hand strain

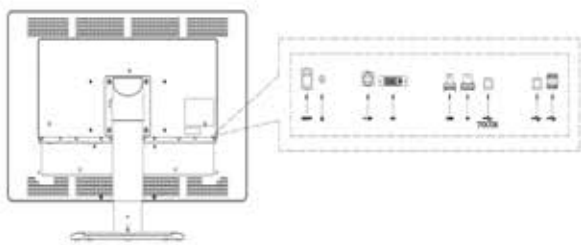


Rapidly locates the cursor and allows the user return to work quickly without frustration

# 8.2MP Color Pathology Display System - Technical Specifications

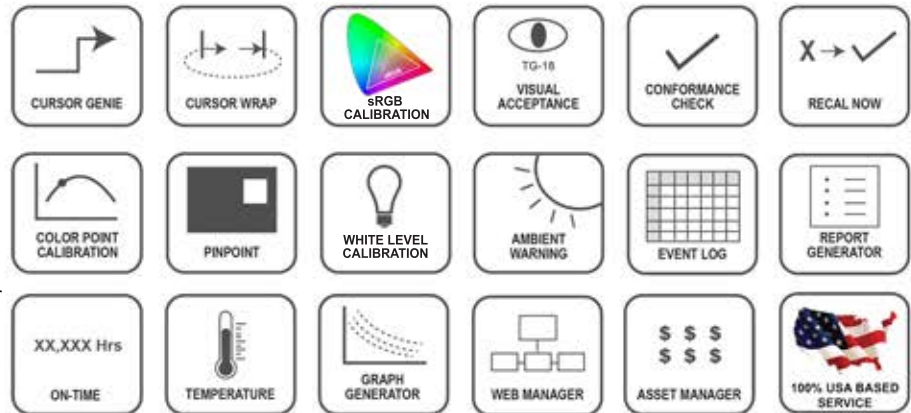


Specifications	DBI PA 27	DBI PA 27T
Size and Aspect Ratio	27", TFT Color; 16:9 Aspect Ratio	
Active Display Area H x V	596.26 x 335.34 mm; 23.47" x 13.20"	
Resolution	3840 x 2160	
Brightness	500 cd/m <sup>2</sup> Calibrated Brightness	
Contrast Ratio	1000:1 Typ.	
Color Support	1.07B Colors (8bit + Hi FRC)	
Response Time	T <sub>R</sub> +T <sub>F</sub> 16ms	
Pixel Pitch	0.15525mm x 0.15525mm	
Built In Sensors	Front Sensor, Backlight Sensor	
Color Mode	sRGB, Gamma2.2	
TouchPanel - <i>DBI PA27T Only</i>	P-CAP Touch panel, Max. 10 Point	
Surface Treatment	Anti-Reflective	
Calibration Modes	sRGB and DICOM with Built in Front Sensors Via CFS. Includes auto-reporting, alerting and CFS Web Manager	
Applications	Designed Specifically for Digital Pathology/Whole Slide Imaging (WSI)	
Viewing Angle	178° Typical	
Video Input / USB (1up 1down)	Display Port (1), HDMI (1), DVI-D (1), USB (1 Up, 2 Down), USB Type-A (Touch PA27T)	
Power Supply	External for added reliability. AC Input to power brick: 100-240V	
Tilt/Pivot/Height Adjustment	-5 to + 20° Tilt   +/- 90° Pivot   110mm Height Adjustment	
Weight w/ stand (approx)	28.5 lbs DBI PA27; 31.1 lbs DBI PA 27T	
Dimensions ( W x H x D )	25.4" x 18.6" x 8.86" with Stand	
Mounting Options	100 x 100 mm VESA	
Safety & Emissions	IEC60601-1:2005+A1:2012, EN60601-1:2006+A1:2013+A12:2014, ANST/AAMIES60601-1:2005+R1:2012, CAN/CSAC22.2 No.60601-1:14, IEC60601-1-2: 2014(ed.4) EN60601-1-2:2015(ed.4), FCC part 15 Class B, ICES-003Level B, VCCI(Japan), 3C, China Energy Label EU RoHS, China RoHS, REACH, WEEE, Packaging Directive ISTA 1E, CE EMC+LVD, Canada Health, FDA 510(k) Clearance with Leica Aperio GT 450 DX with Aperio WebViewer DX. cleared under K232202	
Warranty	5-Year Warranty with Hot Swap	



## Calibration Feedback System – CFS™

- Our industry leading CFS™ software - Client and Web Manager
- Ensures calibration and confidence to sRGB
- Provides tools to enhance visibility, efficiency, workflow
- Enables performance monitoring and asset management
- CFS™ Software comes standard with every pathology display



## Hassle-Free Services & Support

Overcome technical challenges with our team of experienced engineers and technicians. Whether it's a simple answer or on-site troubleshooting, we can help any time, every time. Accurate and consistent presentation of images is a critical requirement for radiology displays.



**DBI Service Desk**  
Comprehensive  
Technical Support

**Hot Swap**  
Extended Warranty &  
Advanced Replacement Program

