



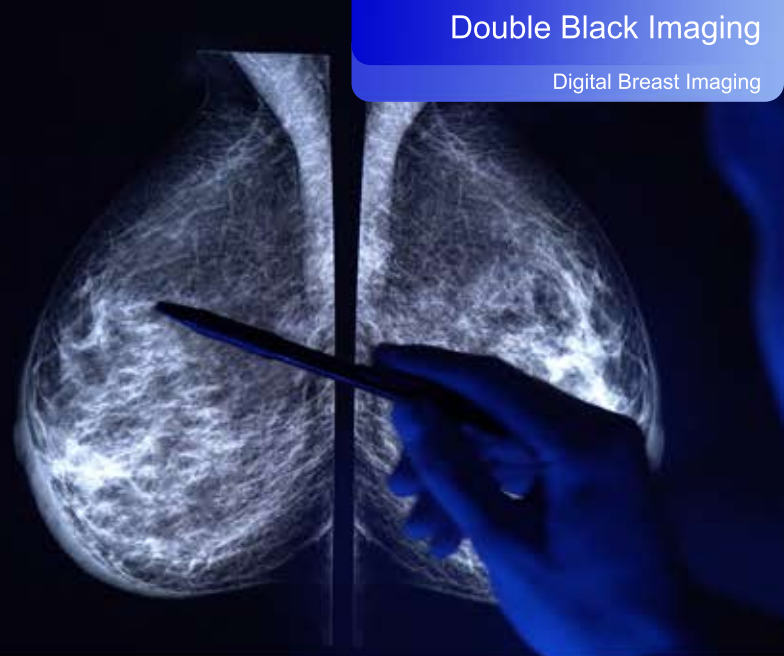
Display Solutions Optimized for Breast Imaging

Double Black Imaging's 5MP and 12MP Display solutions are designed to enhance digital breast imaging with exceptional image quality, ensuring high accuracy in diagnosis and compliance with ACR, and MQSA guidelines. Ideal for multi-modality imaging, including mammography and tomosynthesis, these displays deliver clear, crisp images vital for digital breast imaging.

The Gemini Series 12MP color LED backlit display system doubles the resolution and eliminates gaps between screens in multi-head configurations, allowing seamless eye movement between images to boost productivity and efficiency. The 5MP Color dual head system features dual-head displays angled inward for enhanced user comfort.

All Double Black Imaging Breast Imaging displays come with built-in front sensors for hands-free automatic DICOM 3.14 calibration, backlight sensors for long-term stability, ambient light sensors, auto-report generation, MQSA Reporting, QC wizards and web-based non-conformance alerts.

Additional user-friendly features include auto-dimming, image pinpointing, cursor wrap, and cursor genie functions, all designed to improve workflow and enhance the user experience.



About Double Black Imaging

We are proud to be the largest display supplier and calibration software developer, creating 100% of our software and performing 100% display system integration in the USA.

Our team has a renowned history of providing the industry's finest customer service, continually acknowledged by thousands of users and IT Professionals who put their trust in us every day.

We are dedicated to developing innovative imaging solutions that greatly improve image quality and stability. Making imaging more efficient and reducing cost of ownership are DBI Cornerstones.



5MP Dual Display System

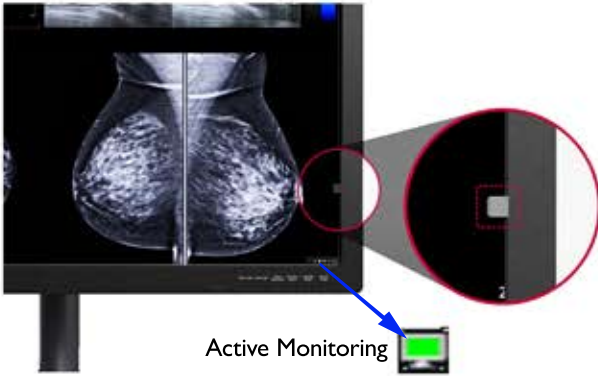


Gemini 12MP



DOUBLE BLACK
IMAGING

Automatic DICOM Calibration with CFS™



Built in front sensors eliminate the need for bulky photometers and manual, time-consuming calibration and conformance testing. All DBI displays are bundled with the CFS™ Calibration software suite for automatic DICOM calibration, conformance testing, report generation, MQSA testing, reporting, and non-conformance alerts via the web.

DOUBLE BLACK IMAGING CFS Workstations

CFS Workstations | CFS Displays | X-CAL

CFS Home | Global Changes | Global Reports | Test History | QCQA History

Work Station Filters

Icon	Attached Monitors	Most Recent Activity	Workgroup	Work Station	Network ID
In Full Compliance (6)	Station In Alert (0)	Out of Compliance (1)	Station Offline (1)		
1: In Full Compliance	7 weeks ago on 06/08/21	WHQ/CR/North	N/A	DB42W106402-HP	
1: In Full Compliance	3 weeks ago on 07/07/21	DBI/WH/Roy/East	N/A	DBZ620PROD-HP	
1: In Full Compliance	Current	DBI/WH/Roy/North	2UA03307C9	DESKTOP-M2QC78M	
1: In Full Compliance	36 minutes ago	DBI/David Office	N/A	DPPCW8	
1: In Full Compliance	Current	DBI/WH/Roy/West	2UA2520MBC	OCVUE	
1: In Full Compliance	2 hours ago	DBI/WH/Roy/South	2UA13209WN	USER-HP	

DOUBLE BLACK IMAGING Reports

CFS Workstations | CFS Displays | X-CAL

Global Reports

Visual Acceptance Reports

MQSA Summary Reports

Hours Reports

DOUBLE BLACK IMAGING CFS DICOM Report

Facility Information

Computer Information

Display 1 Information

Display 2 Information

DOUBLE BLACK IMAGING Test History

CFS Workstations | CFS Displays | X-CAL

Global Reports | Test History | QCQA History

ID	Date/Time	Monitor	Station	Value	Sta	Pass/Fail
Con	2021-07-14 18:01	MSMTLDB0001	ANAS-WN10	1.95%	Pass	
Con	2021-07-14 18:01	CKR00020002	ANAS-WN10	2.23%	Pass	
Con	2021-07-14 18:01	MSMTLDB0002	ANAS-WN10	1.28%	Pass	
Max	2021-07-14 17:54	MSMTLDB0001	ANAS-WN10	0.371 cd/m²	1632.1	Pass
Min	2021-07-14 17:54	CKR00020002	ANAS-WN10	0.241 cd/m²	Pass	
Max	2021-07-14 17:54	MSMTLDB0001	ANAS-WN10	0.270 cd/m²	1634.1	Pass
Min	2021-07-14 17:51	CKR00020002	ANAS-WN10	492 cd/m²	Pass	
Max	2021-07-14 17:51	MSMTLDB0001	ANAS-WN10	350 cd/m²	Pass	
Min	2021-07-14 17:52	MSMTLDB0001	ANAS-WN10	350 cd/m²	Pass	
Max	2021-07-14 17:52	MSMTLDB0001	ANAS-WN10	98 cd/m²	9%	Pass
Min	2021-07-14 17:52	CKR00020002	ANAS-WN10	402 cd/m²	1.9%	Pass
Max	2021-07-14 17:52	MSMTLDB0001	ANAS-WN10	341 cd/m²	3.8%	Pass
Min	2021-07-14 18:09	CKR00020002	ANAS-WN10	0.241 cd/m²	1633.1	Pass
Con	2021-07-14 18:09	CKR00020002	ANAS-WN10	0.23%	Pass	
Con	2021-07-14 18:07	MSMTLDB0001	ANAS-WN10	1.95%	Pass	
Con	2021-07-14 18:01	MSMTLDB0001	ANAS-WN10	0.67%	Pass	
Con	2021-07-14 18:01	MSMTLDB0001	ANAS-WN10	0.17%	Pass	
Max	2021-07-14 17:51	MSMTLDB0001	ANAS-WN10	0.370 cd/m²	1425.1	Pass
Min	2021-07-14 17:51	CKR00020002	ANAS-WN10	0.241 cd/m²	1632.1	Pass
Min	2021-07-14 17:52	CKR00020002	ANAS-WN10	492 cd/m²	Pass	

Lighting to Reduce Eye Strain

Each Double Black Imaging Breast Imaging system is equipped with private ambient lights to illuminate the reading station desk and/or wall. The adjustable built in lighting system allows the radiologist to work effectively and comfortably while reducing fatigue and eye strain.

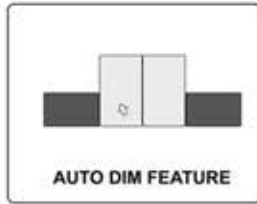


Productivity Tool Kit

The inclusive CFS Productivity toolkit consists of several utilities designed to improve User workflow, enhance visual clarity, reduce distraction, minimize hand strain, fatigue, frustration, and ultimately diminish visual strain.

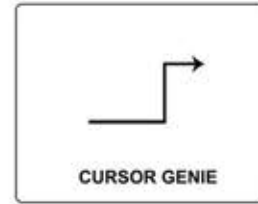


Red arrows are sources of Disability Glare & Discomfort Glare



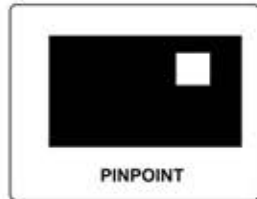
AUTO DIM FEATURE

Eliminates distractions and eye strain from bright neighboring monitors



CURSOR GENIE

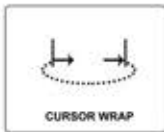
Saves time and the frustration of a user's cursor getting stuck in the corners of a display



PINPOINT



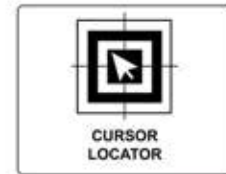
Enables the user to concentrate on key areas of interest



CURSOR WRAP



Allows the user to quickly move between screens in a multi-display environment, reducing hand strain



CURSOR LOCATOR



Rapidly locates the cursor and allows the user return to work quickly without frustration

Ergonomically Designed

Each display is ergonomically designed to reduce strain and fatigue caused by long hours at the workstation. This stand allows users to freely adjust the tilt, height, and swivel.



Display base and design differ between models

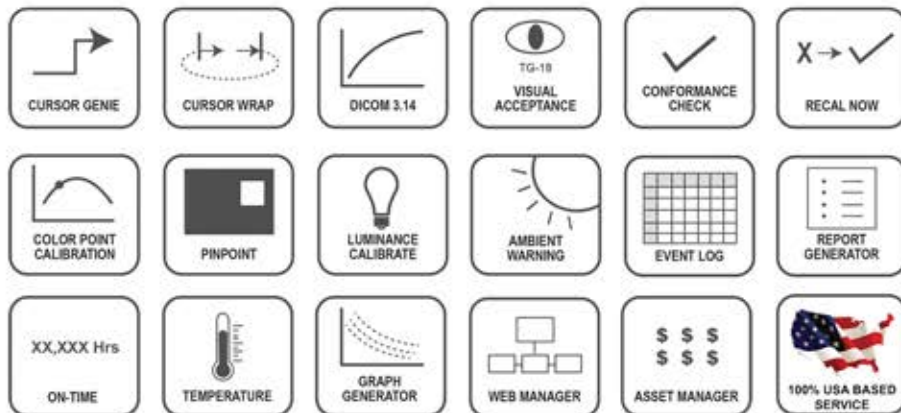
Breast Imaging Displays - Technical Specifications



Specifications	5MP Color	12G
Size and Aspect Ratio	21.3" / 4:5 Aspect Ratio	31" / 3:2 Aspect Ratio
Active Display Area H x V	12.875 x 17.063"	25.75 x 17.125"
Resolution	2048 x 2560 (5MP)	4200 x 2800 (12MP)
Brightness	1100 cd/m ² ; 420-600cd/m ² Calibrated	1200 cd/m ² ; 420-750cd/m ² Calibrated
Contrast Ratio	1800:1	1500:1
Look Up Table	10-bit LUT	
Response Time	5 ms (GtG at faster)	14ms (Off); 5ms (Fast Setting)
Pixel Pitch	0.165 x 0.165 mm	0.1554 x 0.1554 mm
Built In Sensors	Front Sensor, Backlight Sensor, Ambient Light Sensor, Presence Sensor	
Tilt/Swivel/Height Adjustment	-3 to 15°; +/- 20°; 110mm	-5 to 15°; +/- 15°; 110mm
Color Modes	White/Clear Base; Blue Base	
Viewing Angle	178° Typ.	
Video Input / USB	DisplayPort, DVI-D, USB (2 up, 2 down)	DisplayPort (2), USB (1 up, 3 down)
Power Supply	External for Added Reliability. AC Input to power brick: 100-240V	
Power Consumption	100w max/ Power save ~2w	80w max/ Power save <0.3w
Operating Temperature	0° to 40°C (32° to 104°F)	
Operational Humidity	15% - 80%	
Storage Temperature	-20° to +60°C (-4° to + 140°F)	
Weight w/ stand (approx)	17.3 lbs w/stand; 12.01 lbs w/o stand	30.9 lbs w/stand; 23.6 w/o stand
Dimensions (W x H x D)	14.4" x 24.97" x 9.19" w/stand 14.4" x 18.6" x 3.07" w/o stand	27.7" x 26.1" x 11 w/stand 27.7" x 19.7" x 3.3" w/o stand
Mounting Options	100 x 100 mm VESA	
Safety & Emissions	IEC (IEC 60601-1/IEC 60601-1-2), EN (EN 60601-1/EN 60601-1-2), IEC (IEC 60950-1 & IEC 62368-1 / CISPR 32, 35), EN (EN 62368-1 / EN 55032, 55035), cUL (ANSI/AAMI ES 60601-1, CSA CAN/CSA-C22.2 NO. 60601-1), CE MDR, ISO13485, RoHS, REACH, WEEE, MFDS, FDA 510(k) Class II	
Warranty	5-Year warranty with Advance Hot Swap	
PACS Application	Multi-Modality PACS, CR/DR CT MRI US DSI DSA PET/CT Image Fusion X-Ray Nuclear Medicine	
Mammography Application	Digital Mammography, Digital Breast Tomosynthesis	

Calibration Feedback System – CFS™

- Our industry leading CFS™ software - Client and Web Manager
- Ensures calibration and confidence to DICOM 3.14
- Provides tools to enhance visibility, efficiency, workflow
- Enables performance monitoring and asset management
- Accurate calibration of both color and gray shades
- CFS™ Software comes standard with every G-Series display



Hassle-Free Services & Support

Overcome technical challenges with our team of experienced engineers and technicians. Whether it's a simple answer or on-site troubleshooting, we can help any time, every time. Accurate and consistent presentation of images is a critical requirement for radiology displays.



DBI Service Desk
Comprehensive
Technical Support

Hot Swap
Extended Warranty &
Advanced Replacement Program

